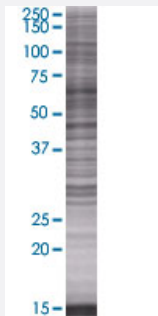


FCRLM1 293T Cell Transient Overexpression Lysate(Denatured)

Catalog # H00084824-T01

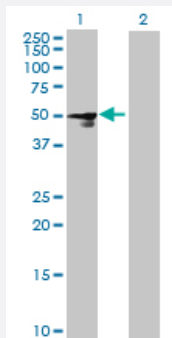
Size 100 uL

Applications



SDS-PAGE Gel

FCRLA transfected lysate.



Western Blot

Lane 1: FCRLA transfected lysate (41.47 KDa)

Lane 2: Non-transfected lysate.

Specification

Transfected Cell Line	293T
Plasmid	pCMV-FCRLM1 full-length
Host	Human
Theoretical MW (kDa)	41.47
Interspecies Antigen Sequence	Mouse (66); Rat (64)

Quality Control Testing

Transient overexpression cell lysate was tested with Anti-FCRLM1 antibody ([H00084824-B01](#)) by Western Blots.
SDS-PAGE Gel
FCRLA transfected lysate.
Western Blot
Lane 1: FCRLA transfected lysate (41.47 KDa)
Lane 2: Non-transfected lysate.

Storage Buffer

1X Sample Buffer (50 mM Tris-HCl, 2% SDS, 10% glycerol, 300 mM 2-mercaptoethanol, 0.01% Bromophenol blue)

Storage Instruction

Store at -80°C. Aliquot to avoid repeated freezing and thawing.

Applications

- Western Blot

Gene Info — FCRLA

Entrez GeneID

[84824](#)

GeneBank Accession#

[NM_032738.3](#)

Protein Accession#

[NP_116127.3](#)

Gene Name

FCRLA

Gene Alias

FCRL, FCRL1, FCRLM1, FCRLX, FCRLb, FCRLc1, FCRLc2, FCRLd, FCRLe, FCRX, FREB, MGC4595, RP11-474I16.5

Gene Description

Fc receptor-like A

Omim ID

[606891](#)

Gene Ontology

[Hyperlink](#)

Gene Summary

Receptors for the Fc fragment of IgG, or FCGRs (see MIM 146790), are cell surface glycoproteins of the Ig superfamily (IgSF). These receptors mediate phagocytosis of IgG-coated pathogens and promote activation of effector cells, leading to inflammatory responses and antibody-mediated cellular cytotoxicity. All FCGR genes map to human chromosome 1. Additional genes in this region, including FREB, encode FCGR homologs that are selectively expressed in B cells and may be implicated in B-cell development and lymphomagenesis.[supplied by OMIM]

Other Designations

Fc receptor homolog expressed in B cells (FREB)|Fc receptor related protein X|Fc receptor-like and mucin-like 1|OTTHUMP00000032485