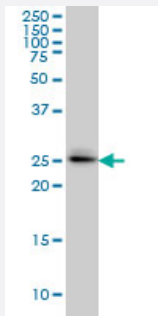


GRCC9 monoclonal antibody (M01), clone 1E6

Catalog # H00084727-M01

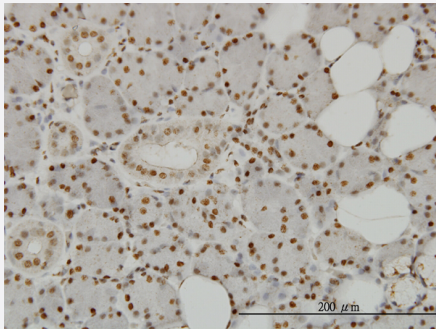
Size 100 ug

Applications



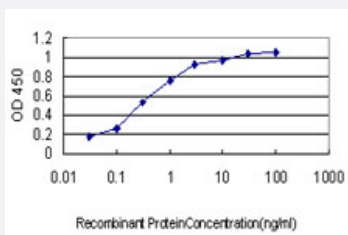
Western Blot (Cell lysate)

GRCC9 monoclonal antibody (M01), clone 1E6 Western Blot analysis of SPSB2 expression in A-549 (Cat # L025V1).



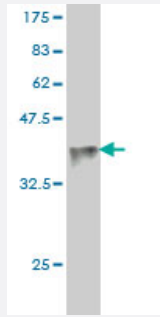
Immunohistochemistry (Formalin/PFA-fixed paraffin-embedded sections)

Immunoperoxidase of monoclonal antibody to SPSB2 on formalin-fixed paraffin-embedded human salivary gland. [antibody concentration 3 ug/ml]



Sandwich ELISA (Recombinant protein)

Detection limit for recombinant GST tagged SPSB2 is approximately 0.03ng/ml as a capture antibody.



Western Blot detection against Immunogen (35.64 KDa) .

Specification

Product Description	Mouse monoclonal antibody raised against a partial recombinant GRCC9.
Immunogen	GRCC9 (AAH02983, 1 a.a. ~ 90 a.a) partial recombinant protein with GST tag. MW of the GST tag alone is 26 KDa.
Sequence	MGQTALAGGSSSTPTPQALYPDLSCPEGLEELLSAPPPDLGAQRRHGWNPKDCSENIEVKEGG LYFERRPVAQSTDGARGKRGYSRGLHA
Host	Mouse
Reactivity	Human
Interspecies Antigen Sequence	Mouse (89)
Isotype	IgG1 Kappa
Quality Control Testing	Antibody Reactive Against Recombinant Protein. Western Blot detection against Immunogen (35.64 KDa) .
Storage Buffer	In 1x PBS, pH 7.4
Storage Instruction	Store at -20°C or lower. Aliquot to avoid repeated freezing and thawing.

Applications

- Western Blot (Cell lysate)

GRCC9 monoclonal antibody (M01), clone 1E6 Western Blot analysis of SPSB2 expression in A-549 (Cat # L025V1).

[Protocol Download](#)

- Western Blot (Recombinant protein)

[Protocol Download](#)

- Immunohistochemistry (Formalin/PFA-fixed paraffin-embedded sections)

Immunoperoxidase of monoclonal antibody to SPSB2 on formalin-fixed paraffin-embedded human salivary gland. [antibody concentration 3 ug/ml]

[Protocol Download](#)

- Sandwich ELISA (Recombinant protein)

Detection limit for recombinant GST tagged SPSB2 is approximately 0.03ng/ml as a capture antibody.

[Protocol Download](#)

- ELISA

Gene Info — SPSB2

Entrez GeneID [84727](#)

GeneBank Accession# [BC002983](#)

Protein Accession# [AAH02983](#)

Gene Name SPSB2

Gene Alias GRCC9, MGC2519, SSB-2, SSB2

Gene Description splA/ryanodine receptor domain and SOCS box containing 2

Omim ID [611658](#)

Gene Ontology [Hyperlink](#)

Gene Summary This gene encodes a suppressor of cytokine signaling (SOCS) family member, and it belongs to the subfamily of proteins containing a central SPRY (repeats in splA and RyR) domain and a C-terminal SOCS box. This gene is present in a gene-rich cluster on chromosome 12p13 in the vicinity of the CD4 antigen and triosephosphate isomerase genes. Alternative splicing results in multiple transcript variants. [provided by RefSeq]

Other Designations SPRY domain-containing SOCS box protein SSB-2