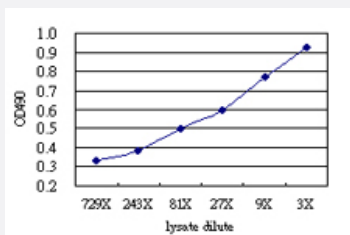


SPSB2 (Human) Matched Antibody Pair

Catalog # H00084727-AP51

Size 1 Set

Applications



Sandwich ELISA detection sensitivity ranging from approximately 729x to 3x dilution of the SPSB2 293T overexpression lysate (non-denatured).

Specification

Product Description	This antibody pair set comes with a matched antibody pair to detect and quantify the protein level of human SPSB2.
Reactivity	Human
Interspecies Antigen Sequence	Mouse (90)
Quality Control Testing	Standard curve using SPSB2 293T overexpression lysate (non-denatured) as an analyte. Sandwich ELISA detection sensitivity ranging from approximately 729x to 3x dilution of the SPSB2 293T overexpression lysate (non-denatured).
Supplied Product	Antibody pair set content: 1. Capture antibody: mouse monoclonal anti-SPSB2 (100 ug) 2. Detection antibody: rabbit purified polyclonal anti-SPSB2 (50 ug) *Reagents are sufficient for at least 3-5 x 96 well plates using recommended protocols.
Storage Instruction	Store reagents of the antibody pair set at -20°C or lower. Please aliquot to avoid repeated freeze thaw cycle. Reagents should be returned to -20°C storage immediately after use.

Applications

- ELISA Pair (Transfected lysate)

[Protocol Download](#)

Gene Info — SPSB2

Entrez GeneID [84727](#)

Gene Name SPSB2

Gene Alias GRCC9, MGC2519, SSB-2, SSB2

Gene Description splA/ryanodine receptor domain and SOCS box containing 2

Omim ID [611658](#)

Gene Ontology [Hyperlink](#)

Gene Summary This gene encodes a suppressor of cytokine signaling (SOCS) family member, and it belongs to the subfamily of proteins containing a central SPRY (repeats in splA and RyR) domain and a C-terminal SOCS box. This gene is present in a gene-rich cluster on chromosome 12p13 in the vicinity of the CD4 antigen and triosephosphate isomerase genes. Alternative splicing results in multiple transcript variants. [provided by RefSeq]

Other Designations SPRY domain-containing SOCS box protein SSB-2