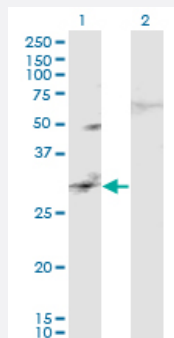


CAPS2 monoclonal antibody (M02), clone 3C6

Catalog # H00084698-M02

Size 100 ug

Applications

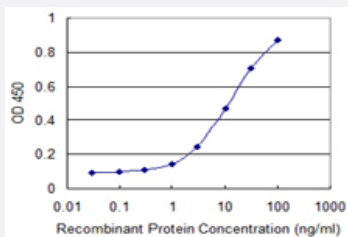


Western Blot (Transfected lysate)

Western Blot analysis of CAPS2 expression in transfected 293T cell line by CAPS2 monoclonal antibody (M02), clone 3C6.

Lane 1: CAPS2 transfected lysate (Predicted MW: 33.7 KDa).

Lane 2: Non-transfected lysate.



Sandwich ELISA (Recombinant protein)

Detection limit for recombinant GST tagged CAPS2 is 0.3 ng/ml as a capture antibody.

Specification

Product Description	Mouse monoclonal antibody raised against a partial recombinant CAPS2.
Immunogen	CAPS2 (NP_115995.1, 285 a.a. ~ 382 a.a) partial recombinant protein with GST tag. MW of the GST tag alone is 26 KDa.
Sequence	YRKS YVRKAFMKLDFNKSGSVPIINIRKCYCAKKHSQVISGHSTEEEEKSSFLET LKVACSKSDEVS YGEFEDYYEGLSIGVDDDFVNILRTPWGI
Host	Mouse
Reactivity	Human

Interspecies Antigen Sequence	Mouse (83); Rat (86)
Isotype	IgG2b Kappa
Quality Control Testing	Antibody Reactive Against Recombinant Protein.
Storage Buffer	In 1x PBS, pH 7.4
Storage Instruction	Store at -20°C or lower. Aliquot to avoid repeated freezing and thawing.

Applications

- Western Blot (Transfected lysate)

Western Blot analysis of CAPS2 expression in transfected 293T cell line by CAPS2 monoclonal antibody (M02), clone 3C6.

Lane 1: CAPS2 transfected lysate (Predicted MW: 33.7 KDa).

Lane 2: Non-transfected lysate.

[Protocol Download](#)

- Sandwich ELISA (Recombinant protein)

Detection limit for recombinant GST tagged CAPS2 is 0.3 ng/ml as a capture antibody.

[Protocol Download](#)

- ELISA

Gene Info — CAPS2

Entrez GeneID	84698
GeneBank Accession#	NM_032606
Protein Accession#	NP_115995.1
Gene Name	CAPS2
Gene Alias	FLJ34520, UG0636c06
Gene Description	calcyphosine 2
Omim ID	607724
Gene Ontology	Hyperlink

Gene Summary

Calcyphosine-2 is a calcium-binding protein with 2 EF-hand motifs (Wang et al., 2002 [PubMed 1846421]).[supplied by OMIM]

Other Designations

calcyphosphine 2