

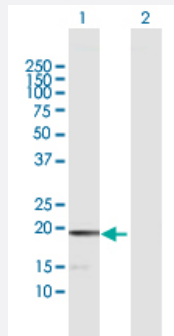
MaxPab®

MCEE purified MaxPab rabbit polyclonal antibody (D01P)

Catalog # H00084693-D01P

Size 100 ug

Applications



Western Blot (Transfected lysate)

Western Blot analysis of MCEE expression in transfected 293T cell line ([H00084693-T01](#)) by MCEE MaxPab polyclonal antibody.

Lane 1: MCEE transfected lysate(18.70 kDa).

Lane 2: Non-transfected lysate.

Specification

Product Description	Rabbit polyclonal antibody raised against a full-length human MCEE protein.
Immunogen	MCEE (NP_115990.2, 1 a.a. ~ 176 a.a) full-length human protein.
Sequence	MARVLKAAAANAVGLFSRLQAPI TVRASSTSQPLDQVTGSVWNLGRLNHVAIAVPDLEKAAAFY KNILGAQVSEAVPLPEHGVSVVFVNLGNTKMELLHPLGLD SPIAGFLQKNKAGGMHHICIEVDNIN AAVMDLKKKKIRSLSEEVKIGAHGKPVIFLHPKDCGGVLVELEQA
Host	Rabbit
Reactivity	Human
Interspecies Antigen Sequence	Mouse (78); Rat (83)
Quality Control Testing	Antibody reactive against mammalian transfected lysate.
Storage Buffer	In 1x PBS, pH 7.4
Storage Instruction	Store at -20°C or lower. Aliquot to avoid repeated freezing and thawing.

Applications

- Western Blot (Transfected lysate)

Western Blot analysis of MCEE expression in transfected 293T cell line ([H00084693-T01](#)) by MCEE MaxPab polyclonal antibody.

Lane 1: MCEE transfected lysate(18.70 KDa).

Lane 2: Non-transfected lysate.

[Protocol Download](#)

Gene Info — MCEE

Entrez GeneID [84693](#)

GeneBank Accession# [NM_032601.2](#)

Protein Accession# [NP_115990.2](#)

Gene Name MCEE

Gene Alias GLOD2

Gene Description methylmalonyl CoA epimerase

Omim ID [608419](#)

Gene Ontology [Hyperlink](#)

Gene Summary The product of this gene catalyzes the interconversion of D- and L-methylmalonyl-CoA during the degradation of branched chain amino acids, odd chain-length fatty acids, and other metabolites. Mutations in this gene result in methylmalonyl-CoA epimerase deficiency, which is presented as mild to moderate methylmalonic aciduria. [provided by RefSeq]

Other Designations DL-methylmalonyl-CoA racemase|OTTHUMP00000160122|glyoxalase domain containing 2

Pathway

- [Metabolic pathways](#)
- [Propanoate metabolism](#)
- [Valine](#)