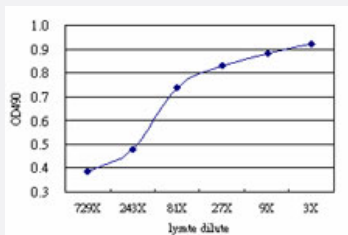


ACCS (Human) Matched Antibody Pair

Catalog # H00084680-AP51 Size 1 Set

Applications



Sandwich ELISA detection sensitivity ranging from approximately 729x to 3x dilution of the ACCS 293T overexpression lysate (non-denatured).

Specification

Product Description	This antibody pair set comes with a matched antibody pair to detect and quantify the protein level of human ACCS.
Reactivity	Human
Interspecies Antigen Sequence	Mouse (84); Rat (83)
Quality Control Testing	Standard curve using ACCS 293T overexpression lysate (non-denatured) as an analyte. Sandwich ELISA detection sensitivity ranging from approximately 729x to 3x dilution of the ACCS 293T overexpression lysate (non-denatured).
Supplied Product	Antibody pair set content: 1. Capture antibody: mouse monoclonal anti-ACCS (100 ug) 2. Detection antibody: rabbit purified polyclonal anti-ACCS (50 ug) *Reagents are sufficient for at least 3-5 x 96 well plates using recommended protocols.
Storage Instruction	Store reagents of the antibody pair set at -20°C or lower. Please aliquot to avoid repeated freeze thaw cycle. Reagents should be returned to -20°C storage immediately after use.

Applications

- ELISA Pair (Transfected lysate)

[Protocol Download](#)

Gene Info — ACCS

Entrez GeneID [84680](#)

Gene Name ACCS

Gene Alias ACS, PHACS

Gene Description 1-aminocyclopropane-1-carboxylate synthase homolog (Arabidopsis)(non-functional)

Omim ID [608405](#)

Gene Ontology [Hyperlink](#)

Other Designations 1-aminocyclopropane-1-carboxylate synthase homolog

Disease

- [Adenocarcinoma](#)
- [Esophageal Neoplasms](#)