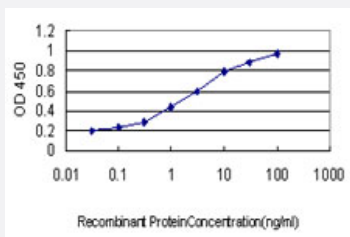


FBXL10 monoclonal antibody (M09), clone 5G1

Catalog # H00084678-M09

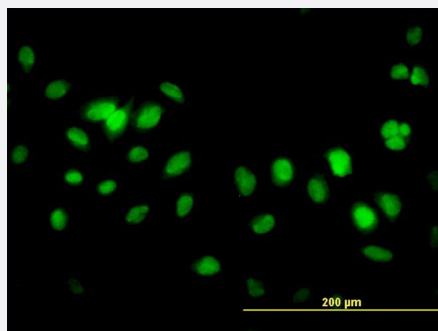
Size 100 ug

Applications



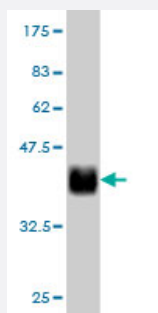
Sandwich ELISA (Recombinant protein)

Detection limit for recombinant GST tagged FBXL10 is approximately 0.1ng/ml as a capture antibody.



Immunofluorescence

Immunofluorescence of monoclonal antibody to FBXL10 on HeLa cell. [antibody concentration 10 ug/ml]



Western Blot detection against Immunogen (36.63 KDa) .

Specification

Product Description

Mouse monoclonal antibody raised against a partial recombinant FBXL10.

| | |
|-------------------------------|---|
| Immunogen | FBXL10 (NP_115979, 457 a.a. ~ 555 a.a) partial recombinant protein with GST tag. MW of the GST tag alone is 26 KDa. |
| Sequence | LGKKPKAPALRFLKRTLSNESEESVKSTTLAVDYPKTPTGSPATEVSAKWTHLTEFELKGLKALV EKLESLPENKKCVPEGIEDPQALLEGVKNVLKEH |
| Host | Mouse |
| Reactivity | Human |
| Interspecies Antigen Sequence | Mouse (93); Rat (95) |
| Isotype | IgG2b Kappa |
| Quality Control Testing | Antibody Reactive Against Recombinant Protein. Western Blot detection against Immunogen (36.63 KDa) . |
| Storage Buffer | In 1x PBS, pH 7.4 |
| Storage Instruction | Store at -20°C or lower. Aliquot to avoid repeated freezing and thawing. |

Applications

- Western Blot (Recombinant protein)

[Protocol Download](#)

- Sandwich ELISA (Recombinant protein)

Detection limit for recombinant GST tagged FBXL10 is approximately 0.1 ng/ml as a capture antibody.

[Protocol Download](#)

- ELISA

- Immunofluorescence

Immunofluorescence of monoclonal antibody to FBXL10 on HeLa cell. [antibody concentration 10 ug/ml]

Gene Info — FBXL10

Entrez GeneID [84678](#)

GeneBank Accession# [NM_032590](#)

| | |
|--------------------|---|
| Protein Accession# | NP_115979 |
| Gene Name | FBXL10 |
| Gene Alias | CXXC2, Fbl10, JHDM1B, KDM2B, PCCX2 |
| Gene Description | F-box and leucine-rich repeat protein 10 |
| Omim ID | 609078 |
| Gene Ontology | Hyperlink |
| Gene Summary | This gene encodes a member of the F-box protein family which is characterized by an approximately 40 amino acid motif, the F-box. The F-box proteins constitute one of the four subunits of ubiquitin protein ligase complex called SCFs (SKP1-cullin-F-box), which function in phosphorylation-dependent ubiquitination. The F-box proteins are divided into 3 classes: Fbws containing WD-40 domains, Fbls containing leucine-rich repeats, and Fbxs containing either different protein-protein interaction modules or no recognizable motifs. The protein encoded by this gene belongs to the Fbls class. Multiple alternatively spliced transcript variants have been found for this gene, but the full-length nature of some variants has not been determined. [provided by RefSeq] |
| Other Designations | JEMMA (Jumonji domain, EMSY-interactor, methyltransferase motif) protein jumonji C domain-containing histone demethylase 1B protein containing CXXC domain 2 |

Publication Reference

- [JHDM1B/FBXL10 is a nucleolar protein that represses transcription of ribosomal RNA genes.](#)

Frescas D, Guardavaccaro D, Bassermann F, Koyama-Nasu R, Pagano M.

Nature 2007 Nov; 450(7167):309.

Application: IF, Human, HeLa cells

Disease

- [Tobacco Use Disorder](#)