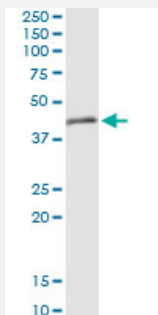


TRIM63 (Human) IP-WB Antibody Pair

Catalog # H00084676-PW2

Size 1 Set

Applications



Immunoprecipitation of TRIM63 transfected lysate using rabbit polyclonal anti-TRIM63 and Protein A Magnetic Bead ([U0007](#)), and immunoblotted with mouse purified polyclonal anti-TRIM63.

Specification

Product Description	This IP-WB antibody pair set comes with one antibody for immunoprecipitation and another to detect the precipitated protein in western blot.
Reactivity	Human
Interspecies Antigen Sequence	Mouse (91); Rat (90)
Quality Control Testing	Immunoprecipitation-Western Blot (IP-WB) Immunoprecipitation of TRIM63 transfected lysate using rabbit polyclonal anti-TRIM63 and Protein A Magnetic Bead (U0007), and immunoblotted with mouse purified polyclonal anti-TRIM63.
Supplied Product	Antibody pair set content: 1. Antibody pair for IP: rabbit polyclonal anti-TRIM63 (300 ul) 2. Antibody pair for WB: mouse purified polyclonal anti-TRIM63 (50 ug)
Storage Instruction	Store reagents of the antibody pair set at -20°C or lower. Please aliquot to avoid repeated freeze thaw cycle. Reagents should be returned to -20°C storage immediately after use.

Applications

- Immunoprecipitation-Western Blot

[Protocol Download](#)

Gene Info — TRIM63

Entrez GeneID [84676](#)

Gene Name TRIM63

Gene Alias FLJ32380, IRF, MURF1, MURF2, RNF28, SMRZ

Gene Description tripartite motif-containing 63

Omim ID [606131](#)

Gene Ontology [Hyperlink](#)

Gene Summary This gene encodes a member of the RING zinc finger protein family found in striated muscle and is. The product of this gene is localized to the Z-line and M-line lattices of myofibrils, where titin's N-terminal and C-terminal regions respectively bind to the sarcomere. In vitro binding studies have shown that this protein also binds directly to titin near the region of titin containing kinase activity. Another member of this protein family binds to microtubules. Since these family members can form heterodimers, this suggests that these proteins may serve as a link between titin kinase and microtubule-dependent signal pathways in muscle. [provided by RefSeq]

Other Designations OTTHUMP00000008701|iris ring finger protein|muscle specific ring finger protein 1|muscle specific ring finger protein 2|ring finger protein 28|striated muscle RING zinc finger protein