

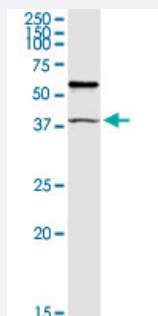
MaxPab®

# TRIM63 purified MaxPab rabbit polyclonal antibody (D01P)

Catalog # H00084676-D01P

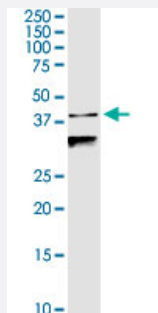
Size 100 ug

## Applications



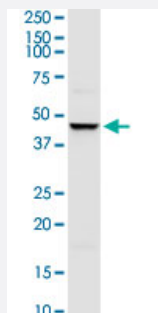
### Western Blot (Tissue lysate)

TRIM63 MaxPab rabbit polyclonal antibody. Western Blot analysis of TRIM63 expression in human stomach.



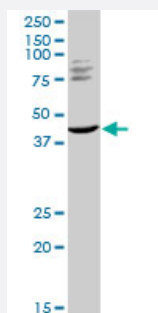
### Western Blot (Tissue lysate)

TRIM63 MaxPab rabbit polyclonal antibody. Western Blot analysis of TRIM63 expression in mouse testis.



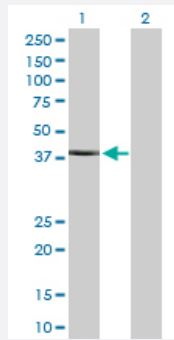
### Western Blot (Cell lysate)

TRIM63 MaxPab rabbit polyclonal antibody. Western Blot analysis of TRIM63 expression in MCF-7.



### Western Blot (Cell lysate)

TRIM63 MaxPab rabbit polyclonal antibody. Western Blot analysis of TRIM63 expression in NIH/3T3.



## Western Blot (Transfected lysate)

Western Blot analysis of TRIM63 expression in transfected 293T cell line ([H00084676-T02](#)) by TRIM63 MaxPab polyclonal antibody.

Lane 1: TRIM63 transfected lysate(40.20 KDa).

Lane 2: Non-transfected lysate.

## Specification

<b>Product Description</b>	Rabbit polyclonal antibody raised against a full-length human TRIM63 protein.
<b>Immunogen</b>	TRIM63 (NP_115977.2, 1 a.a. ~ 353 a.a) full-length human protein.
<b>Sequence</b>	MDYKSSLIQDGNPMENLEKQLICPICLEMFTKPVVILPCQHNLCRKCANDIFQAANPYWTSRGSSV MSGGRFRCPCTCRHEVIMDRHGVYGLQRNLLVENIIDYKQECSSRPLQKGSHPMCKEHEDEKINI YCLTCEVPTCSMCKVFGIHKACEVAPLQSVFQGQKTELNNCISMLVAGNDRVQTITQLEDSSRRVT KENSHQVKEELSQKFDTLYAILDEKKSELLQRITQEQEKKLSFIEALIQYQEQLDKSTKLVETAIQS LDEPGGATFLLTAKQLIKSMEASKGCQLGKTEQGFENMDDFFTLDEHIADALRAIDFGTDEEEEEEF IEEEDQEEEEESTEGKEEGHQ
<b>Host</b>	Rabbit
<b>Reactivity</b>	Human, Mouse
<b>Interspecies Antigen Sequence</b>	Mouse (93); Rat (92)
<b>Quality Control Testing</b>	Antibody reactive against mammalian transfected lysate.
<b>Storage Buffer</b>	In 1x PBS, pH 7.4
<b>Storage Instruction</b>	Store at -20°C or lower. Aliquot to avoid repeated freezing and thawing.

## Applications

- Western Blot (Tissue lysate)

TRIM63 MaxPab rabbit polyclonal antibody. Western Blot analysis of TRIM63 expression in human stomach.

[Protocol Download](#)

- Western Blot (Tissue lysate)

TRIM63 MaxPab rabbit polyclonal antibody. Western Blot analysis of TRIM63 expression in mouse testis.

[Protocol Download](#)

- Western Blot (Cell lysate)

TRIM63 MaxPab rabbit polyclonal antibody. Western Blot analysis of TRIM63 expression in MCF-7.

[Protocol Download](#)

- Western Blot (Cell lysate)

TRIM63 MaxPab rabbit polyclonal antibody. Western Blot analysis of TRIM63 expression in NIH/3T3.

[Protocol Download](#)

- Western Blot (Transfected lysate)

Western Blot analysis of TRIM63 expression in transfected 293T cell line ([H00084676-T02](#)) by TRIM63 MaxPab polyclonal antibody.

Lane 1: TRIM63 transfected lysate(40.20 KDa).

Lane 2: Non-transfected lysate.

[Protocol Download](#)

## Gene Info — TRIM63

Entrez GeneID	<a href="#">84676</a>
---------------	-----------------------

GeneBank Accession#	<a href="#">NM_032588.2</a>
---------------------	-----------------------------

Protein Accession#	<a href="#">NP_115977.2</a>
--------------------	-----------------------------

Gene Name	TRIM63
-----------	--------

Gene Alias	FLJ32380, IRF, MURF1, MURF2, RNF28, SMRZ
------------	--

Gene Description	tripartite motif-containing 63
------------------	--------------------------------

Omim ID	<a href="#">606131</a>
---------	------------------------

Gene Ontology	<a href="#">Hyperlink</a>
---------------	---------------------------

**Gene Summary**

This gene encodes a member of the RING zinc finger protein family found in striated muscle and iris. The product of this gene is localized to the Z-line and M-line lattices of myofibrils, where titin's N-terminal and C-terminal regions respectively bind to the sarcomere. In vitro binding studies have shown that this protein also binds directly to titin near the region of titin containing kinase activity. Another member of this protein family binds to microtubules. Since these family members can form heterodimers, this suggests that these proteins may serve as a link between titin kinase and microtubule-dependent signal pathways in muscle. [provided by RefSeq]

**Other Designations**

OTTHUMP00000008701|iris ring finger protein|muscle specific ring finger protein 1|muscle specific ring finger protein 2|ring finger protein 28|striated muscle RING zinc finger protein