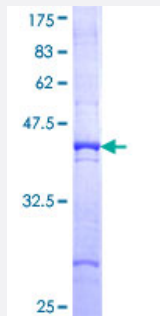


# CARD6 (Human) Recombinant Protein (Q01)

Catalog # H00084674-Q01

Size 25 ug, 10 ug

## Applications



## Specification

<b>Product Description</b>	Human CARD6 partial ORF ( NP_115976, 1 a.a. - 110 a.a.) recombinant protein with GST-tag at N-terminal.
<b>Sequence</b>	MATESTPSEIIERERKKLLEILQHDPDSILDTLSRRLISEEEYETLENTDLLKKSRLKLLVQKKGE ATCQHFLKCLFSTFPQSAICGLRHEVLKHENTVPPQSMGA
<b>Host</b>	Wheat Germ (in vitro)
<b>Theoretical MW (kDa)</b>	37.84
<b>Interspecies Antigen Sequence</b>	Mouse (67); Rat (71)
<b>Preparation Method</b>	<a href="#">in vitro wheat germ expression system</a>
<b>Purification</b>	Glutathione Sepharose 4 Fast Flow
<b>Quality Control Testing</b>	12.5% SDS-PAGE Stained with Coomassie Blue.
<b>Storage Buffer</b>	50 mM Tris-HCl, 10 mM reduced Glutathione, pH=8.0 in the elution buffer.
<b>Storage Instruction</b>	Store at -80°C. Aliquot to avoid repeated freezing and thawing.
<b>Note</b>	Best use within three months from the date of receipt of this protein.

## Applications

- Enzyme-linked Immunoabsorbent Assay
- Western Blot (Recombinant protein)
- Antibody Production
- Protein Array

## Gene Info — CARD6

**Entrez GeneID** [84674](#)

**GeneBank Accession#** [NM\\_032587](#)

**Protein Accession#** [NP\\_115976](#)

**Gene Name** CARD6

**Gene Alias** CINCIN1

**Gene Description** caspase recruitment domain family, member 6

**Omim ID** [609986](#)

**Gene Ontology** [Hyperlink](#)

**Gene Summary** This gene encodes a protein that contains a caspase recruitment domain (CARD), an antiparallel six-helical bundle that mediates homotypic protein-protein interactions. The encoded protein is a microtubule-associated protein that has been shown to interact with receptor-interacting protein kinases and positively modulate signal transduction pathways converging on activation of the inducible transcription factor NF- $\kappa$ B. [provided by RefSeq]

**Other Designations** CARD-containing inhibitor of Nod1 and Cardiac-induced NF- $\kappa$ B activation|caspase recruitment domain protein 6