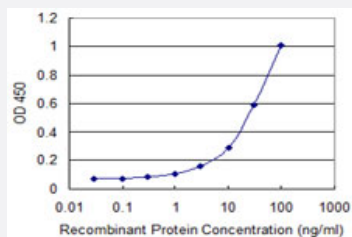


CARD6 monoclonal antibody (M01), clone 2H8

Catalog # H00084674-M01

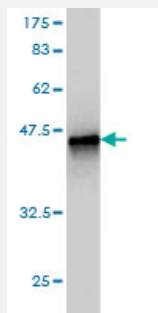
Size 100 ug

Applications



Sandwich ELISA (Recombinant protein)

Detection limit for recombinant GST tagged CARD6 is 0.3 ng/ml as a capture antibody.



Western Blot detection against Immunogen (37.84 KDa) .

Specification

Product Description	Mouse monoclonal antibody raised against a partial recombinant CARD6.
Immunogen	CARD6 (NP_115976, 1 a.a. ~ 110 a.a) partial recombinant protein with GST tag. MW of the GST tag alone is 26 KDa.
Sequence	MATESTPSSEIERERKKLLEILQHDPDSILDTLSRRLISEEEYETLENTDLLKKSRLKLLLVQKKGE ATCQHFLKCLFSTFPQSAICGLRHEVLKHENTVPPQSMGA
Host	Mouse
Reactivity	Human

Interspecies Antigen Sequence	Mouse (67); Rat (71)
Isotype	IgG2a Kappa
Quality Control Testing	Antibody Reactive Against Recombinant Protein. Western Blot detection against Immunogen (37.84 KDa) .
Storage Buffer	In 1x PBS, pH 7.4
Storage Instruction	Store at -20°C or lower. Aliquot to avoid repeated freezing and thawing.

Applications

- Western Blot (Recombinant protein)

[Protocol Download](#)

- Sandwich ELISA (Recombinant protein)

Detection limit for recombinant GST tagged CARD6 is 0.3 ng/ml as a capture antibody.

[Protocol Download](#)

- ELISA

Gene Info — CARD6

Entrez GeneID	84674
GeneBank Accession#	NM_032587
Protein Accession#	NP_115976
Gene Name	CARD6
Gene Alias	CINCIN1
Gene Description	caspase recruitment domain family, member 6
Omim ID	609986
Gene Ontology	Hyperlink

Gene Summary

This gene encodes a protein that contains a caspase recruitment domain (CARD), an antiparallel six-helical bundle that mediates homotypic protein-protein interactions. The encoded protein is a microtubule-associated protein that has been shown to interact with receptor-interacting protein kinases and positively modulate signal transduction pathways converging on activation of the inducible transcription factor NF- κ B. [provided by RefSeq]

Other Designations

CARD-containing inhibitor of Nod1 and Cardiac-induced NF- κ B activation|caspase recruitment domain protein 6