

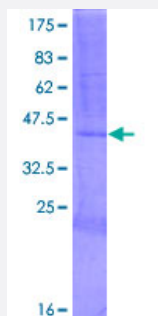
Full-Length

# RNASE7 (Human) Recombinant Protein (P01)

Catalog # H00084659-P01

Size 25 ug, 10 ug

## Applications



## Specification

<b>Product Description</b>	Human RNASE7 full-length ORF ( NP_115961.1, 1 a.a. - 156 a.a.) recombinant protein with GST-tag at N-terminal.
<b>Sequence</b>	MAPARAGFCPLLLLLLLGLWVAEIPVSAKPKGMTSSQWFKIQHMQPSPQACNSAMKNINKHTKR CKDLNTFLHEPFSSVAATCQTPKIACKNGDKNCHQSHGPVSLTMCKLTSGKYPNCRYKEKRQNK SYVVACKPPQKKDSQQFHLVPVHLDRVL
<b>Host</b>	Wheat Germ (in vitro)
<b>Theoretical MW (kDa)</b>	43.9
<b>Preparation Method</b>	<a href="#">in vitro wheat germ expression system</a>
<b>Purification</b>	Glutathione Sepharose 4 Fast Flow
<b>Quality Control Testing</b>	12.5% SDS-PAGE Stained with Coomassie Blue.
<b>Storage Buffer</b>	50 mM Tris-HCl, 10 mM reduced Glutathione, pH=8.0 in the elution buffer.
<b>Storage Instruction</b>	Store at -80°C. Aliquot to avoid repeated freezing and thawing.
<b>Note</b>	Best use within three months from the date of receipt of this protein.

## Applications

- Enzyme-linked Immunoabsorbent Assay
- Western Blot (Recombinant protein)
- Antibody Production
- Protein Array

## Gene Info — RNASE7

**Entrez GeneID** [84659](#)

**GeneBank Accession#** [NM\\_032572.2](#)

**Protein Accession#** [NP\\_115961.1](#)

**Gene Name** RNASE7

**Gene Alias** MGC133220

**Gene Description** ribonuclease, RNase A family, 7

**Gene Ontology** [Hyperlink](#)

**Gene Summary** RNASE7 is a member of the RNase A superfamily that has broad-spectrum antimicrobial activity and ribonuclease activity (Harder and Schroder, 2002 [PubMed 12244054]; Zhang et al., 2003 [PubMed 12527768]).[supplied by OMIM]

**Other Designations** ribonuclease 7