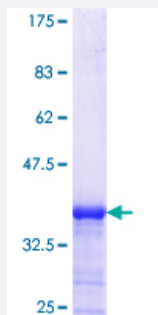


# KIRREL3 (Human) Recombinant Protein (Q01)

Catalog # H00084623-Q01

Size 25 ug, 10 ug

## Applications



## Specification

<b>Product Description</b>	Human KIRREL3 partial ORF ( NP_115920.1, 679 a.a. - 778 a.a.) recombinant protein with GST-tag at N-terminal.
<b>Sequence</b>	YSTLSGQGRLYDYGQRFVLGMGSSSIELCEREFQRGSLSDSSSFLDTQCDSSVSSSGKQDGYVQ FDKASKASASSSHHSQSSSQNSDPSRPLQRRMQTHV
<b>Host</b>	Wheat Germ (in vitro)
<b>Theoretical MW (kDa)</b>	36.74
<b>Interspecies Antigen Sequence</b>	Mouse (100); Rat (100)
<b>Preparation Method</b>	<a href="#">in vitro wheat germ expression system</a>
<b>Purification</b>	Glutathione Sepharose 4 Fast Flow
<b>Quality Control Testing</b>	12.5% SDS-PAGE Stained with Coomassie Blue.
<b>Storage Buffer</b>	50 mM Tris-HCl, 10 mM reduced Glutathione, pH=8.0 in the elution buffer.
<b>Storage Instruction</b>	Store at -80°C. Aliquot to avoid repeated freezing and thawing.
<b>Note</b>	Best use within three months from the date of receipt of this protein.

## Applications

- Enzyme-linked Immunoabsorbent Assay
- Western Blot (Recombinant protein)
- Antibody Production
- Protein Array

## Gene Info — KIRREL3

Entrez GeneID [84623](#)

GeneBank Accession# [NM\\_032531](#)

Protein Accession# [NP\\_115920.1](#)

Gene Name KIRREL3

Gene Alias KIAA1867, KIRRE, MGC126824, MGC126850, NEPH2, PRO4502

Gene Description kin of IRRE like 3 (Drosophila)

Omim ID [607761](#)

Gene Ontology [Hyperlink](#)

**Gene Summary** The protein encoded by this gene is a member of the nephrin-like protein family. These proteins are expressed in fetal and adult brain, and also in podocytes of kidney glomeruli. The cytoplasmic domains of these proteins interact with the C-terminus of podocin, also expressed in the podocytes, cells involved in ensuring size- and charge-selective ultrafiltration. Mutations in this gene are associated with mental retardation autosomal dominant type 4 (MRD4). Alternatively spliced transcript variants encoding different isoforms have been found for this gene

**Other Designations** kin of IRRE like 3

## Disease

- [Tobacco Use Disorder](#)