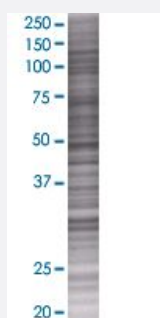


PARD6B 293T Cell Transient Overexpression Lysate(Denatured)

Catalog # H00084612-T01

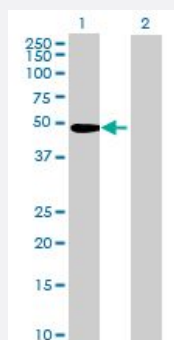
Size 100 uL

Applications



SDS-PAGE Gel

PARD6B transfected lysate.



Western Blot

Lane 1: PARD6B transfected lysate (41.2 KDa)

Lane 2: Non-transfected lysate.

Specification

Transfected Cell Line	293T
Plasmid	pCMV-PARD6B full-length
Host	Human
Theoretical MW (kDa)	41.2
Interspecies Antigen Sequence	Mouse (91); Rat (91)

Quality Control Testing

Transient overexpression cell lysate was tested with Anti-PARD6B antibody ([H00084612-B01](#)) by Western Blots.
SDS-PAGE Gel
PARD6B transfected lysate.
Western Blot
Lane 1: PARD6B transfected lysate (41.2 KDa)
Lane 2: Non-transfected lysate.

Storage Buffer

1X Sample Buffer (50 mM Tris-HCl, 2% SDS, 10% glycerol, 300 mM 2-mercaptoethanol, 0.01% Bromophenol blue)

Storage Instruction

Store at -80°C. Aliquot to avoid repeated freezing and thawing.

Applications

- Western Blot

Gene Info — PARD6B

Entrez GeneID

[84612](#)

GeneBank Accession#

[NM_032521](#)

Protein Accession#

[NP_115910.1](#)

Gene Name

PARD6B

Gene Alias

PAR6B

Gene Description

par-6 partitioning defective 6 homolog beta (C. elegans)

Omim ID

[608975](#)

Gene Ontology

[Hyperlink](#)

Gene Summary

This gene is a member of the PAR6 family and encodes a protein with a PSD95/Discs-large/ZO1 (PDZ) domain, an OPR domain and a semi-Cdc42/Rac interactive binding (CRIB) domain. This cytoplasmic protein is involved in asymmetrical cell division and cell polarization processes as a member of a multi-protein complex. [provided by RefSeq]

Other Designations

OTTHUMP00000031269|PAR-6 beta

Pathway

- [Endocytosis](#)
- [Tight junction](#)