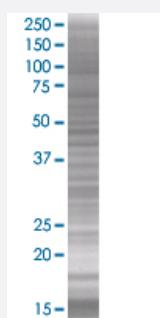


# MAP1LC3A 293T Cell Transient Overexpression Lysate(Denatured)

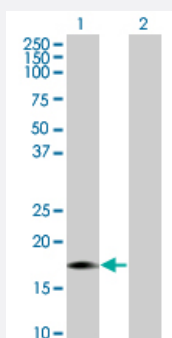
Catalog # H00084557-T01      Size 100 uL

## Applications



### SDS-PAGE Gel

MAP1LC3A transfected lysate.



### Western Blot

Lane 1: MAP1LC3A transfected lysate ( 13.31 KDa)

Lane 2: Non-transfected lysate.

## Specification

Transfected Cell Line	293T
Plasmid	pCMV-MAP1LC3A full-length
Host	Human
Theoretical MW (kDa)	13.31

**Quality Control Testing**

Transient overexpression cell lysate was tested with Anti-MAP1LC3A antibody ([H00084557-B01](#)) by Western Blots.  
SDS-PAGE Gel  
MAP1LC3A transfected lysate.  
Western Blot  
Lane 1: MAP1LC3A transfected lysate ( 13.31 KDa)  
Lane 2: Non-transfected lysate.

**Storage Buffer**

1X Sample Buffer (50 mM Tris-HCl, 2% SDS, 10% glycerol, 300 mM 2-mercaptoethanol, 0.01% Bromophenol blue)

**Storage Instruction**

Store at -80°C. Aliquot to avoid repeated freezing and thawing.

## Applications

- Western Blot

## Gene Info — MAP1LC3A

**Entrez GeneID**[84557](#)**GeneBank Accession#**[BC015810](#)**Protein Accession#**[AAH15810](#)**Gene Name**

MAP1LC3A

**Gene Alias**

LC3, LC3A, MAP1ALC3, MAP1BLC3

**Gene Description**

microtubule-associated protein 1 light chain 3 alpha

**Omim ID**[601242](#)**Gene Ontology**[Hyperlink](#)**Gene Summary**

MAP1A and MAP1B are microtubule-associated proteins which mediate the physical interactions between microtubules and components of the cytoskeleton. MAP1A and MAP1B each consist of a heavy chain subunit and multiple light chain subunits. The protein encoded by this gene is one of the light chain subunits and can associate with either MAP1A or MAP1B. Two transcript variants encoding different isoforms have been found for this gene. [provided by RefSeq]

**Other Designations**

MAP1 light chain 3-like protein 1|MAP1A/1B light chain 3 A|MAP1A/MAP1B LC3 A|OTTHUMP0000030696|OTTHUMP00000030697|OTTHUMP00000030698|microtubule-associated proteins 1A/1B light chain 3