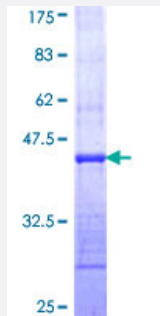


MAP1LC3A (Human) Recombinant Protein (Q01)

Catalog # H00084557-Q01

Size 25 ug, 10 ug

Applications



Specification

Product Description	Human MAP1LC3A partial ORF (NP_115903, 1 a.a. - 102 a.a.) recombinant protein with GST-tag at N-terminal.
Sequence	MPSDRPFKQRRSFADRCKEVQQIRDQHPSKIPVIERYKGEKQLPVLDKTKFLVPDHDVNMSELVKII RRRLQLNPTQAFFLLVNQHSMVSVSTPIADIYEQE
Host	Wheat Germ (in vitro)
Theoretical MW (kDa)	36.96
Preparation Method	in vitro wheat germ expression system
Purification	Glutathione Sepharose 4 Fast Flow
Quality Control Testing	12.5% SDS-PAGE Stained with Coomassie Blue.
Storage Buffer	50 mM Tris-HCl, 10 mM reduced Glutathione, pH=8.0 in the elution buffer.
Storage Instruction	Store at -80°C. Aliquot to avoid repeated freezing and thawing.
Note	Best use within three months from the date of receipt of this protein.

Applications

- Enzyme-linked Immunoabsorbent Assay
- Western Blot (Recombinant protein)
- Antibody Production
- Protein Array

Gene Info — MAP1LC3A

Entrez GeneID [84557](#)

GeneBank Accession# [NM_032514](#)

Protein Accession# [NP_115903](#)

Gene Name MAP1LC3A

Gene Alias LC3, LC3A, MAP1ALC3, MAP1BLC3

Gene Description microtubule-associated protein 1 light chain 3 alpha

Omim ID [601242](#)

Gene Ontology [Hyperlink](#)

Gene Summary MAP1A and MAP1B are microtubule-associated proteins which mediate the physical interactions between microtubules and components of the cytoskeleton. MAP1A and MAP1B each consist of a heavy chain subunit and multiple light chain subunits. The protein encoded by this gene is one of the light chain subunits and can associate with either MAP1A or MAP1B. Two transcript variants encoding different isoforms have been found for this gene. [provided by RefSeq]

Other Designations MAP1 light chain 3-like protein 1|MAP1A/1B light chain 3 A|MAP1A/MAP1B LC3 A|OTTHUMP0000030696|OTTHUMP00000030697|OTTHUMP00000030698|microtubule-associated proteins 1A/1B light chain 3