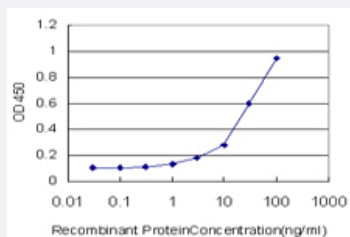


# MAP1LC3A monoclonal antibody (M07), clone 1D5

Catalog # H00084557-M07

Size 100 ug

## Applications



### Sandwich ELISA (Recombinant protein)

Detection limit for recombinant GST tagged MAP1LC3A is approximately 1ng/ml as a capture antibody.

## Specification

<b>Product Description</b>	Mouse monoclonal antibody raised against a partial recombinant MAP1LC3A.
<b>Immunogen</b>	MAP1LC3A (NP_115903, 1 a.a. ~ 102 a.a) partial recombinant protein with GST tag. MW of the GST tag alone is 26 KDa.
<b>Sequence</b>	MPSDRPFKQRRSFADRCKEVQQIRDQHPSKIPVIERYKGEKQLPVLDTKFLVPDHSVNMSELVKII RRRLQLNPTQAFFLLVNQHSMVSVSTPIADIYEQE
<b>Host</b>	Mouse
<b>Reactivity</b>	Human
<b>Isotype</b>	IgG2a Kappa
<b>Quality Control Testing</b>	Antibody Reactive Against Recombinant Protein.
<b>Storage Buffer</b>	In 1x PBS, pH 7.4
<b>Storage Instruction</b>	Store at -20°C or lower. Aliquot to avoid repeated freezing and thawing.

## Applications

- Sandwich ELISA (Recombinant protein)

Detection limit for recombinant GST tagged MAP1LC3A is approximately 1ng/ml as a capture antibody.

[Protocol Download](#)

- ELISA

## Gene Info — MAP1LC3A

Entrez GeneID	<a href="#">84557</a>
---------------	-----------------------

GeneBank Accession#	<a href="#">NM_032514</a>
---------------------	---------------------------

Protein Accession#	<a href="#">NP_115903</a>
--------------------	---------------------------

Gene Name	MAP1LC3A
-----------	----------

Gene Alias	LC3, LC3A, MAP1ALC3, MAP1BLC3
------------	-------------------------------

Gene Description	microtubule-associated protein 1 light chain 3 alpha
------------------	--

Omim ID	<a href="#">601242</a>
---------	------------------------

Gene Ontology	<a href="#">Hyperlink</a>
---------------	---------------------------

Gene Summary	MAP1A and MAP1B are microtubule-associated proteins which mediate the physical interactions between microtubules and components of the cytoskeleton. MAP1A and MAP1B each consist of a heavy chain subunit and multiple light chain subunits. The protein encoded by this gene is one of the light chain subunits and can associate with either MAP1A or MAP1B. Two transcript variants encoding different isoforms have been found for this gene. [provided by RefSeq]
--------------	---

Other Designations	MAP1 light chain 3-like protein 1 MAP1A/1B light chain 3 A MAP1A/MAP1B LC3 A OTTHUMP0000030696 OTTHUMP00000030697 OTTHUMP00000030698 microtubule-associated proteins 1A/1B light chain 3
--------------------	--