

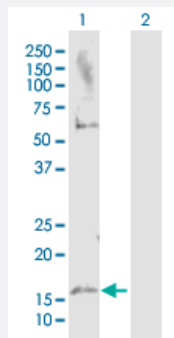
MaxPab®

MAP1LC3A purified MaxPab rabbit polyclonal antibody (D01P)

Catalog # H00084557-D01P

Size 100 ug

Applications



Western Blot (Transfected lysate)

Western Blot analysis of MAP1LC3A expression in transfected 293T cell line ([H00084557-T07](#)) by MAP1LC3A MaxPab polyclonal antibody.

Lane 1: MAP1LC3A transfected lysate(13.31 KDa).

Lane 2: Non-transfected lysate.

Specification

Product Description	Rabbit polyclonal antibody raised against a full-length human MAP1LC3A protein.
Immunogen	MAP1LC3A (AAH15810.1 , 1 a.a. ~ 121 a.a) full-length human protein.
Sequence	MPSDRPFKQRRSFADRCKEVQQIRDQHPSKIPVIERYKGEKQLPVLDKTKFLVPDHSVNMSELVKII RRRLQLNPTQAFFLLVNQHSMVSVSTPIADIYEQEKDEDEGFLYMVYASQETFGF
Host	Rabbit
Reactivity	Human
Quality Control Testing	Antibody reactive against mammalian transfected lysate.
Storage Buffer	In 1x PBS, pH 7.4
Storage Instruction	Store at -20°C or lower. Aliquot to avoid repeated freezing and thawing.

Applications

- Western Blot (Transfected lysate)

Western Blot analysis of MAP1LC3A expression in transfected 293T cell line ([H00084557-T07](#)) by MAP1LC3A MaxPab polyclonal antibody.

Lane 1: MAP1LC3A transfected lysate(13.31 KDa).

Lane 2: Non-transfected lysate.

[Protocol Download](#)

Gene Info — MAP1LC3A

Entrez GeneID [84557](#)

GeneBank Accession# [BC015810.1](#)

Protein Accession# [AAH15810.1](#)

Gene Name MAP1LC3A

Gene Alias LC3, LC3A, MAP1ALC3, MAP1BLC3

Gene Description microtubule-associated protein 1 light chain 3 alpha

Omim ID [601242](#)

Gene Ontology [Hyperlink](#)

Gene Summary MAP1A and MAP1B are microtubule-associated proteins which mediate the physical interactions between microtubules and components of the cytoskeleton. MAP1A and MAP1B each consist of a heavy chain subunit and multiple light chain subunits. The protein encoded by this gene is one of the light chain subunits and can associate with either MAP1A or MAP1B. Two transcript variants encoding different isoforms have been found for this gene. [provided by RefSeq]

Other Designations MAP1 light chain 3-like protein 1|MAP1A/1B light chain 3 A|MAP1A/MAP1B LC3 A|OTTHUMP0000030696|OTTHUMP00000030697|OTTHUMP00000030698|microtubule-associated proteins 1A/1B light chain 3

Publication Reference

- [A Beclin 1-targeting stapled peptide synergizes with erlotinib to potently inhibit proliferation of non-small-cell lung cancer cells.](#)

Jingyi Chen, Xiaozhe Zhang, Shan Gao, Na Li, Vincent Keng, Yanxiang Zhao.

Biochemical and Biophysical Research Communications 2022 Oct; 636(Pt 1):125.

Application: WB, Human, A549, H1975 cells