

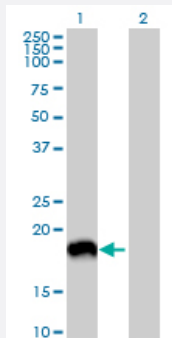
MaxPab®

MAP1LC3A purified MaxPab mouse polyclonal antibody (B01P)

Catalog # H00084557-B01P

Size 50 ug

Applications



Western Blot (Transfected lysate)

Western Blot analysis of MAP1LC3A expression in transfected 293T cell line ([H00084557-T01](#)) by MAP1LC3A MaxPab polyclonal antibody.

Lane 1: MAP1LC3A transfected lysate(13.31 KDa).

Lane 2: Non-transfected lysate.

Specification

Product Description	Mouse polyclonal antibody raised against a full-length human MAP1LC3A protein.
Immunogen	MAP1LC3A (AAH15810.1, 1 a.a. ~ 121 a.a) full-length human protein.
Sequence	MPSDRPFKQRRSFADRCKEVQQIRDQHPSKIPVIERKGEKQLPVLDKTKFLVPDHDVNMSSELVKII RRRLQLNPTQAFFLLVNQHSMVSVSTPIADIYEQEKDEDDGFLYMYASQETFGF
Host	Mouse
Reactivity	Human
Quality Control Testing	Antibody reactive against mammalian transfected lysate.
Storage Buffer	In 1x PBS, pH 7.4
Storage Instruction	Store at -20°C or lower. Aliquot to avoid repeated freezing and thawing.

Applications

- Western Blot (Transfected lysate)

Western Blot analysis of MAP1LC3A expression in transfected 293T cell line ([H00084557-T01](#)) by MAP1LC3A MaxPab polyclonal antibody.

Lane 1: MAP1LC3A transfected lysate(13.31 KDa).

Lane 2: Non-transfected lysate.

[Protocol Download](#)

Gene Info — MAP1LC3A

Entrez GeneID [84557](#)

GeneBank Accession# [BC015810.1](#)

Protein Accession# [AAH15810.1](#)

Gene Name MAP1LC3A

Gene Alias LC3, LC3A, MAP1ALC3, MAP1BLC3

Gene Description microtubule-associated protein 1 light chain 3 alpha

Omim ID [601242](#)

Gene Ontology [Hyperlink](#)

Gene Summary MAP1A and MAP1B are microtubule-associated proteins which mediate the physical interactions between microtubules and components of the cytoskeleton. MAP1A and MAP1B each consist of a heavy chain subunit and multiple light chain subunits. The protein encoded by this gene is one of the light chain subunits and can associate with either MAP1A or MAP1B. Two transcript variants encoding different isoforms have been found for this gene. [provided by RefSeq]

Other Designations MAP1 light chain 3-like protein 1|MAP1A/1B light chain 3 A|MAP1A/MAP1B LC3 A|OTTHUMP0000030696|OTTHUMP00000030697|OTTHUMP00000030698|microtubule-associated proteins 1A/1B light chain 3

Publication Reference

- [CD5L is upregulated in hepatocellular carcinoma and promotes liver cancer cell proliferation and antiapoptotic responses by binding to HSPA5 \(GRP78\).](#)

Aran G, Sanjurjo L, Bárcena C, Simon-Coma M, Téllez É, Vázquez-Vitali M, Garrido M, Guerra L, Díaz E, Ojanguren I, Elortza F, Planas R, Sala M, Armengol C, Sarrias MR.

FASEB Journal 2018 Feb; fj20170094.

Application: WB-Ce, Human, Huh7 cells