

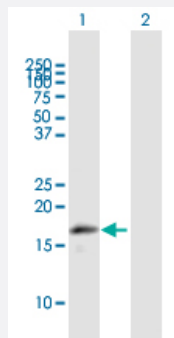
MaxPab®

MRPL43 purified MaxPab mouse polyclonal antibody (B01P)

Catalog # H00084545-B01P

Size 50 ug

Applications



Western Blot (Transfected lysate)

Western Blot analysis of MRPL43 expression in transfected 293T cell line ([H00084545-T02](#)) by MRPL43 MaxPab polyclonal antibody.

Lane 1: MRPL43 transfected lysate(17.49 KDa).

Lane 2: Non-transfected lysate.

Specification

Product Description	Mouse polyclonal antibody raised against a full-length human MRPL43 protein.
Immunogen	MRPL43 (NP_115488.2, 1 a.a. ~ 159 a.a) full-length human protein.
Sequence	MTARGTPSRFLASVLHNLGRYVQQLQRLSFSVSRDGASSRGAREFVEREVIDFARRNPGVVIYV NSRPCCVPRVVAEYLNNAVREESIHCKSVEEISTLVQKLADQSGLDVIRIRKPFHTDNPSIQGQWH PFTNKPTTFRGLRPREVQDPAPAVQAQ
Host	Mouse
Reactivity	Human
Interspecies Antigen Sequence	Mouse (82)
Quality Control Testing	Antibody reactive against mammalian transfected lysate.
Storage Buffer	In 1x PBS, pH 7.4
Storage Instruction	Store at -20°C or lower. Aliquot to avoid repeated freezing and thawing.

Applications

- Western Blot (Transfected lysate)

Western Blot analysis of MRPL43 expression in transfected 293T cell line ([H00084545-T02](#)) by MRPL43 MaxPab polyclonal antibody.

Lane 1: MRPL43 transfected lysate(17.49 KDa).

Lane 2: Non-transfected lysate.

[Protocol Download](#)

Gene Info — MRPL43

Entrez GeneID [84545](#)

GeneBank Accession# [NM_032112](#)

Protein Accession# [NP_115488.2](#)

Gene Name MRPL43

Gene Alias MGC17989, MGC48892, bMRP36a

Gene Description mitochondrial ribosomal protein L43

Gene Ontology [Hyperlink](#)

Gene Summary

Mammalian mitochondrial ribosomal proteins are encoded by nuclear genes and help in protein synthesis within the mitochondrion. Mitochondrial ribosomes (mitoribosomes) consist of a small 28 S subunit and a large 39S subunit. They have an estimated 75% protein to rRNA composition compared to prokaryotic ribosomes, where this ratio is reversed. Another difference between mammalian mitoribosomes and prokaryotic ribosomes is that the latter contain a 5S rRNA. Among different species, the proteins comprising the mitoribosome differ greatly in sequence, and sometimes in biochemical properties, which prevents easy recognition by sequence homology. This gene encodes a 39S subunit protein. This gene and the gene for a semaphorin class 4 protein (SEMA4G) overlap at map location 10q24.31 and are transcribed in opposite directions. Sequence analysis identified multiple transcript variants encoding at least four different protein isoforms. [provided by RefSeq]

Other Designations OTTHUMP00000020304|OTTHUMP00000020305|OTTHUMP00000020307|OTTHUMP00000020310|OTTHUMP00000059154

Disease

- [Alzheimer Disease](#)

- [Genetic Predisposition to Disease](#)