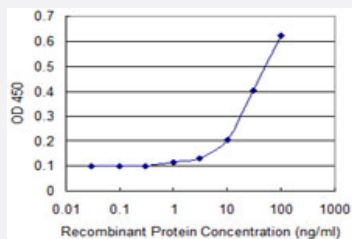


# HOP monoclonal antibody (M01), clone 3D6

Catalog # H00084525-M01

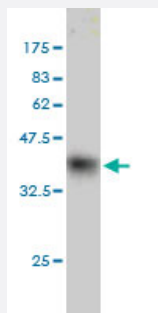
Size 100 ug

## Applications



### Sandwich ELISA (Recombinant protein)

Detection limit for recombinant GST tagged HOP is approximately 3ng/ml as a capture antibody.



Western Blot detection against Immunogen (33.77 KDa) .

## Specification

<b>Product Description</b>	Mouse monoclonal antibody raised against a full length recombinant HOP.
<b>Immunogen</b>	HOP (AAH14225, 1 a.a. ~ 73 a.a) full-length recombinant protein with GST tag. MW of the GST tag alone is 26 KDa.
<b>Sequence</b>	MSAETASGPTEDQVEILEYNFNKVDKHPDSTTLCLIAAEAGLSEEETQKWFKQRLAKWRRSEGLPSECRSVID
<b>Host</b>	Mouse
<b>Reactivity</b>	Human

Interspecies Antigen Sequence	Mouse (90); Rat (90)
Isotype	IgG1 kappa
Quality Control Testing	Antibody Reactive Against Recombinant Protein. Western Blot detection against Immunogen (33.77 KDa) .
Storage Buffer	In 1x PBS, pH 7.4
Storage Instruction	Store at -20°C or lower. Aliquot to avoid repeated freezing and thawing.

## Applications

- Western Blot (Recombinant protein)

[Protocol Download](#)

- Sandwich ELISA (Recombinant protein)

Detection limit for recombinant GST tagged HOP is approximately 3ng/ml as a capture antibody.

[Protocol Download](#)

- ELISA

## Gene Info — HOPX

Entrez GeneID	<a href="#">84525</a>
GeneBank Accession#	<a href="#">BC014225</a>
Protein Accession#	<a href="#">AAH14225</a>
Gene Name	HOPX
Gene Alias	Cameo, HOP, LAGY, MGC20820, NECC1, OB1, SMAP31, Toto
Gene Description	HOP homeobox
Omim ID	<a href="#">607275</a>
Gene Ontology	<a href="#">Hyperlink</a>

**Gene Summary**

The protein encoded by this gene is a homeodomain protein that lacks certain conserved residues required for DNA binding. It was reported that choriocarcinoma cell lines and tissues failed to express this gene, which suggested the possible involvement of this gene in malignant conversion of placental trophoblasts. Studies in mice suggest that this protein may interact with serum response factor (SRF) and modulate SRF-dependent cardiac-specific gene expression and cardiac development. Multiple alternatively spliced transcript variants have been identified for this gene. [provided by RefSeq]

**Other Designations**

OTTHUMP00000158970|heart odd homeobox 1 protein|homeodomain-only protein|lung cancer-associated Y protein|not expressed in choriocarcinoma clone 1