

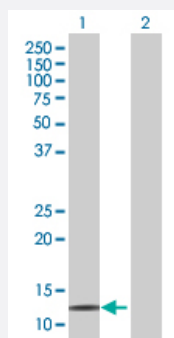
MaxPab®

# HOP MaxPab mouse polyclonal antibody (B02P)

Catalog # H00084525-B02P

Size 50 ug

## Applications



### Western Blot (Transfected lysate)

Western Blot analysis of HOPX expression in transfected 293T cell line ([H00084525-T02](#)) by HOPX MaxPab polyclonal antibody.

Lane 1: HOP transfected lysate(8.03 KDa).

Lane 2: Non-transfected lysate.

## Specification

Product Description	Mouse polyclonal antibody raised against a full-length human HOP protein.
Immunogen	HOP (AAH14225.1, 1 a.a. ~ 73 a.a) full-length human protein.
Sequence	MSAETASGPTEDQVEILEYNFNKVDKHPDSTTLCLIAAEAGLSEEETQKWFKQRLAKWRRSEGL PSECRSVID
Host	Mouse
Reactivity	Human
Interspecies Antigen Sequence	Mouse (90); Rat (90)
Quality Control Testing	Antibody reactive against mammalian transfected lysate.
Storage Buffer	In 1x PBS, pH 7.4
Storage Instruction	Store at -20°C or lower. Aliquot to avoid repeated freezing and thawing.

## Applications

- Western Blot (Transfected lysate)

Western Blot analysis of HOPX expression in transfected 293T cell line ([H00084525-T02](#)) by HOPX MaxPab polyclonal antibody.

Lane 1: HOP transfected lysate(8.03 KDa).

Lane 2: Non-transfected lysate.

[Protocol Download](#)

## Gene Info — HOPX

Entrez GeneID	<a href="#">84525</a>
---------------	-----------------------

GeneBank Accession#	<a href="#">BC014225.2</a>
---------------------	----------------------------

Protein Accession#	<a href="#">AAH14225.1</a>
--------------------	----------------------------

Gene Name	HOPX
-----------	------

Gene Alias	Cameo, HOP, LAGY, MGC20820, NECC1, OB1, SMAP31, Toto
------------	--

Gene Description	HOP homeobox
------------------	--------------

Omim ID	<a href="#">607275</a>
---------	------------------------

Gene Ontology	<a href="#">Hyperlink</a>
---------------	---------------------------

Gene Summary	The protein encoded by this gene is a homeodomain protein that lacks certain conserved residues required for DNA binding. It was reported that choriocarcinoma cell lines and tissues failed to express this gene, which suggested the possible involvement of this gene in malignant conversion of placental trophoblasts. Studies in mice suggest that this protein may interact with serum response factor (SRF) and modulate SRF-dependent cardiac-specific gene expression and cardiac development. Multiple alternatively spliced transcript variants have been identified for this gene. [provided by RefSeq]
--------------	--

Other Designations	OTTHUMP00000158970 heart odd homeobox 1 protein homeodomain-only protein lung cancer-associated Y protein not expressed in choriocarcinoma clone 1
--------------------	--