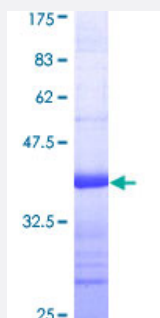


MCM8 (Human) Recombinant Protein (Q01)

Catalog # H00084515-Q01

Size 25 ug, 10 ug

Applications



Specification

Product Description	Human MCM8 partial ORF (AAH08830, 646 a.a. - 735 a.a.) recombinant protein with GST-tag at N-terminal.
Sequence	TYSDEFGNLDGFERSQHGSGMSNRSTAKRFISALNNVAERTYNNIFQFHQLRQIAKELNIQVADFEN FIGSLNDQGYLLKKGPKVYQLQTM
Host	Wheat Germ (in vitro)
Theoretical MW (kDa)	35.53
Interspecies Antigen Sequence	Mouse (96); Rat (97)
Preparation Method	in vitro wheat germ expression system
Purification	Glutathione Sepharose 4 Fast Flow
Quality Control Testing	12.5% SDS-PAGE Stained with Coomassie Blue.
Storage Buffer	50 mM Tris-HCl, 10 mM reduced Glutathione, pH=8.0 in the elution buffer.
Storage Instruction	Store at -80°C. Aliquot to avoid repeated freezing and thawing.
Note	Best use within three months from the date of receipt of this protein.

Applications

- Enzyme-linked Immunoabsorbent Assay
- Western Blot (Recombinant protein)
- Antibody Production
- Protein Array

Gene Info — MCM8

Entrez GeneID [84515](#)

GeneBank Accession# [BC008830](#)

Protein Accession# [AAH08830](#)

Gene Name MCM8

Gene Alias C20orf154, MGC119522, MGC119523, MGC12866, MGC4816, REC, dJ967N21.5

Gene Description minichromosome maintenance complex component 8

Omim ID [608187](#)

Gene Ontology [Hyperlink](#)

Gene Summary The protein encoded by this gene is one of the highly conserved mini-chromosome maintenance proteins (MCM) that are essential for the initiation of eukaryotic genome replication. The hexameric protein complex formed by the MCM proteins is a key component of the pre-replication complex (pre_RC) and may be involved in the formation of replication forks and in the recruitment of other DNA replication related proteins. This protein contains the central domain that is conserved among the MCM proteins. This protein has been shown to co-immunoprecipitate with MCM4, 6 and 7, which suggests that it may interact with other MCM proteins and play a role in DNA replication. Alternatively spliced transcript variants encoding distinct isoforms have been described. [provided by RefSeq]

Other Designations DNA replication licensing factor MCM8|MCM8 minichromosome maintenance deficient 8|OTTHUMP00000030217|OTTHUMP00000030218|REC homolog

Publication Reference

- [The selection and characterization of antibodies to minichromosome maintenance proteins that highlight cervical dysplasia.](#)

Henderson D, Hall L, Prpic N, Hessling J, Parker M, Sampson S, Simkins S, Brough G, Dixon E, Lenz K, Knapp S, Murphy P, Taylor A, Fischer T, Malinowski DP.

J Immunol Methods 2011 May; 370:1.

Application: WB, Recombinant protein

Disease

- [Breast Neoplasms](#)
- [Cardiovascular Diseases](#)
- [Diabetes Mellitus](#)
- [Edema](#)
- [Osteoporosis](#)