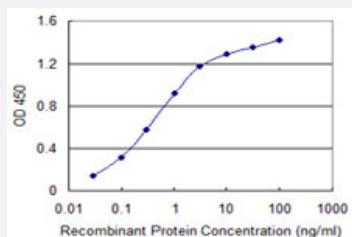


# MCM8 monoclonal antibody (M02), clone 1F9

Catalog # H00084515-M02

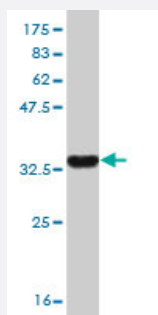
Size 100 ug

## Applications



### Sandwich ELISA (Recombinant protein)

Detection limit for recombinant GST tagged MCM8 is 0.03 ng/ml as a capture antibody.



Western Blot detection against Immunogen (35.53 KDa) .

## Specification

### Product Description

Mouse monoclonal antibody raised against a partial recombinant MCM8.

### Immunogen

MCM8 (AAH08830, 646 a.a. ~ 735 a.a) partial recombinant protein with GST tag. MW of the GST tag alone is 26 KDa.

### Sequence

TYSDEFGNLD FERSQHSGMSNRSTAKRFISALNNVAERTYNNIFQFHQLRQIAKELNIQVADFEN  
FIGSLNDQGYLLKKGPKVYQLQTM

### Host

Mouse

### Reactivity

Human

Interspecies Antigen Sequence	Mouse (96); Rat (97)
Isotype	IgG1 Kappa
Quality Control Testing	Antibody Reactive Against Recombinant Protein. Western Blot detection against Immunogen (35.53 KDa) .
Storage Buffer	In 1x PBS, pH 7.4
Storage Instruction	Store at -20°C or lower. Aliquot to avoid repeated freezing and thawing.

## Applications

- Western Blot (Recombinant protein)

[Protocol Download](#)

- Sandwich ELISA (Recombinant protein)

Detection limit for recombinant GST tagged MCM8 is 0.03 ng/ml as a capture antibody.

[Protocol Download](#)

- ELISA

## Gene Info — MCM8

Entrez GeneID	<a href="#">84515</a>
GeneBank Accession#	<a href="#">BC008830</a>
Protein Accession#	<a href="#">AAH08830</a>
Gene Name	MCM8
Gene Alias	C20orf154, MGC119522, MGC119523, MGC12866, MGC4816, REC, dJ967N21.5
Gene Description	minichromosome maintenance complex component 8
Omim ID	<a href="#">608187</a>
Gene Ontology	<a href="#">Hyperlink</a>

**Gene Summary**

The protein encoded by this gene is one of the highly conserved mini-chromosome maintenance proteins (MCM) that are essential for the initiation of eukaryotic genome replication. The hexameric protein complex formed by the MCM proteins is a key component of the pre-replication complex (pre\_RC) and may be involved in the formation of replication forks and in the recruitment of other DNA replication related proteins. This protein contains the central domain that is conserved among the MCM proteins. This protein has been shown to co-immunoprecipitate with MCM4, 6 and 7, which suggests that it may interact with other MCM proteins and play a role in DNA replication. Alternatively spliced transcript variants encoding distinct isoforms have been described. [provided by RefSeq]

**Other Designations**

DNA replication licensing factor MCM8|MCM8 minichromosome maintenance deficient 8|OTTHUMP00000030217|OTTHUMP00000030218|REC homolog

**Disease**

- [Breast Neoplasms](#)
- [Cardiovascular Diseases](#)
- [Diabetes Mellitus](#)
- [Edema](#)
- [Osteoporosis](#)