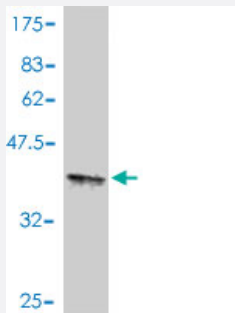


# CARD11 polyclonal antibody (A01)

Catalog # H00084433-A01

Size 50 uL

## Applications



Western Blot detection against Immunogen (37.11 KDa) .

## Specification

<b>Product Description</b>	Mouse polyclonal antibody raised against a partial recombinant CARD11.
<b>Immunogen</b>	CARD11 (NP_115791, 481 a.a. ~ 580 a.a) partial recombinant protein with GST tag.
<b>Sequence</b>	KYFLPYHPPQRRMNLKGIQLQRAKSPISLKRTSDFQAKGHEEEGTDASPSSCGSLPITNSFTKMQ PPRSRSSIMSITAEPGNDIVRRYKEDAPHRSTV
<b>Host</b>	Mouse
<b>Reactivity</b>	Human
<b>Interspecies Antigen Sequence</b>	Mouse (84)
<b>Quality Control Testing</b>	Antibody Reactive Against Recombinant Protein. Western Blot detection against Immunogen (37.11 KDa) .
<b>Storage Buffer</b>	50 % glycerol
<b>Storage Instruction</b>	Store at -20°C or lower. Aliquot to avoid repeated freezing and thawing.

## Applications

- Western Blot (Recombinant protein)

[Protocol Download](#)

- ELISA

## Gene Info — CARD11

Entrez GeneID [84433](#)

GeneBank Accession# [NM\\_032415](#)

Protein Accession# [NP\\_115791](#)

Gene Name CARD11

Gene Alias BIMP3, CARMA1, MGC133069

Gene Description caspase recruitment domain family, member 11

Omim ID [607210](#)

Gene Ontology [Hyperlink](#)

**Gene Summary**

The protein encoded by this gene belongs to the membrane-associated guanylate kinase (MAGUK) family, a class of proteins that functions as molecular scaffolds for the assembly of multiprotein complexes at specialized regions of the plasma membrane. This protein is also a member of the CARD protein family, which is defined by carrying a characteristic caspase-associated recruitment domain (CARD). This protein has a domain structure similar to that of CARD14 protein. The CARD domains of both proteins have been shown to specifically interact with BCL10, a protein known to function as a positive regulator of cell apoptosis and NF-kappaB activation. When expressed in cells, this protein activated NF-kappaB and induced the phosphorylation of BCL10. [provided by RefSeq]

**Other Designations** OTTHUMP00000024641|bcl10-interacting maguk protein 3|card-maguk protein 1

## Pathway

- [B cell receptor signaling pathway](#)
- [T cell receptor signaling pathway](#)

## Disease

- [Sepsis](#)