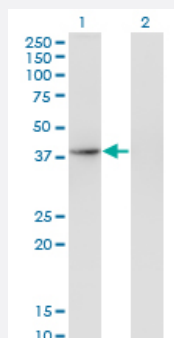


THOC3 monoclonal antibody (M04), clone 3D4

Catalog # H00084321-M04

Size 100 ug

Applications

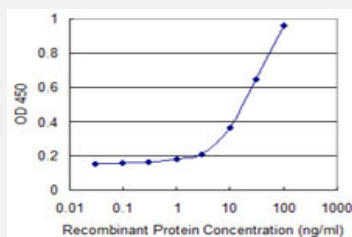


Western Blot (Transfected lysate)

Western Blot analysis of THOC3 expression in transfected 293T cell line by THOC3 monoclonal antibody (M04), clone 3D4.

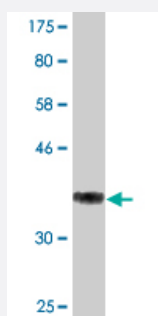
Lane 1: THOC3 transfected lysate (Predicted MW: 38.8 kDa).

Lane 2: Non-transfected lysate.



Sandwich ELISA (Recombinant protein)

Detection limit for recombinant GST tagged THOC3 is 1 ng/ml as a capture antibody.



Western Blot detection against Immunogen (36.74 kDa) .

Specification

Product Description

Mouse monoclonal antibody raised against a partial recombinant THOC3.

Immunogen	THOC3 (NP_115737.1, 252 a.a. ~ 351 a.a) partial recombinant protein with GST tag. MW of the GST tag alone is 26 KDa.
Sequence	DVDELVCVRCFSRLDWPVRTLSFSHDGKMLASASEDHFIDIAEVETGDKLWEVQCESPTFTVA WHPKRPLLAACDDKDGKYDSSREAGTVKLFGLPNDS
Host	Mouse
Reactivity	Human
Interspecies Antigen Sequence	Mouse (100); Rat (100)
Isotype	IgG2b Kappa
Quality Control Testing	Antibody Reactive Against Recombinant Protein. Western Blot detection against Immunogen (36.74 KDa) .
Storage Buffer	In 1x PBS, pH 7.4
Storage Instruction	Store at -20°C or lower. Aliquot to avoid repeated freezing and thawing.

Applications

- Western Blot (Transfected lysate)

Western Blot analysis of THOC3 expression in transfected 293T cell line by THOC3 monoclonal antibody (M04), clone 3D4.

Lane 1: THOC3 transfected lysate (Predicted MW: 38.8 KDa).

Lane 2: Non-transfected lysate.

[Protocol Download](#)

- Western Blot (Recombinant protein)

[Protocol Download](#)

- Sandwich ELISA (Recombinant protein)

Detection limit for recombinant GST tagged THOC3 is 1 ng/ml as a capture antibody.

[Protocol Download](#)

- ELISA

Gene Info — THOC3

Entrez GeneID	84321
GeneBank Accession#	NM_032361
Protein Accession#	NP_115737.1
Gene Name	THOC3
Gene Alias	MGC5469, TEX1
Gene Description	THO complex 3
Omim ID	606929
Gene Ontology	Hyperlink
Gene Summary	TEX1 is part of the TREX (transcription/export) complex, which includes THO2 (MIM 300395), HP R1 (MIM 606930), ALY (MIM 604171), and UAP56 (MIM 606390).[supplied by OMIM]
Other Designations	-