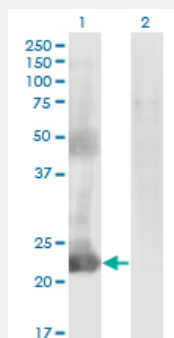


CCDC115 monoclonal antibody (M05), clone 4E9

Catalog # H00084317-M05

Size 100 ug

Applications

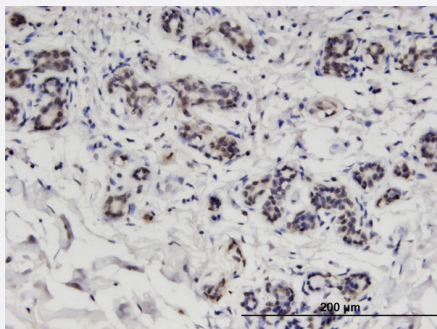


Western Blot (Transfected lysate)

Western Blot analysis of CCDC115 expression in transfected 293T cell line by CCDC115 monoclonal antibody (M05), clone 4E9.

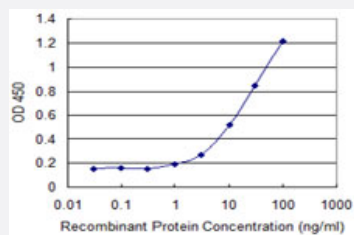
Lane 1: CCDC115 transfected lysate(19.8 KDa).

Lane 2: Non-transfected lysate.



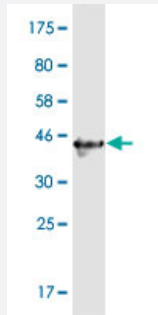
Immunohistochemistry (Formalin/PFA-fixed paraffin-embedded sections)

Immunoperoxidase of monoclonal antibody to CCDC115 on formalin-fixed paraffin-embedded human breast. [antibody concentration 1.5 ug/ml]



Sandwich ELISA (Recombinant protein)

Detection limit for recombinant GST tagged CCDC115 is 0.3 ng/ml as a capture antibody.



Western Blot detection against Immunogen (40.26 KDa) .

Specification

| | |
|--------------------------------------|---|
| Product Description | Mouse monoclonal antibody raised against a full-length recombinant CCDC115. |
| Immunogen | CCDC115 (AAH06429.1, 1 a.a. ~ 132 a.a) full-length recombinant protein with GST tag. MW of the GST tag alone is 26 KDa. |
| Sequence | MGAKSVGPLQYASHMEPQVCLHASEAQEGLQKFKVVVRAGVHAPEEVGPREAGLRRRKGPSTKT PEPESSEAPQDPLNWFGLVPHSLRQAQASFRDGLQLAADIASLQNRIDWGRSGLRGLQEKLKQ LEPGAA |
| Host | Mouse |
| Reactivity | Human |
| Interspecies Antigen Sequence | Mouse (79); Rat (80) |
| Isotype | IgG2b Kappa |
| Quality Control Testing | Antibody Reactive Against Recombinant Protein. Western Blot detection against Immunogen (40.26 KDa) . |
| Storage Buffer | In 1x PBS, pH 7.4 |
| Storage Instruction | Store at -20°C or lower. Aliquot to avoid repeated freezing and thawing. |

Applications

- Western Blot (Transfected lysate)

Western Blot analysis of CCDC115 expression in transfected 293T cell line by CCDC115 monoclonal antibody (M05), clone 4E9.

Lane 1: CCDC115 transfected lysate(19.8 KDa).

Lane 2: Non-transfected lysate.

[Protocol Download](#)

- Western Blot (Recombinant protein)

[Protocol Download](#)

- Immunohistochemistry (Formalin/PFA-fixed paraffin-embedded sections)

Immunoperoxidase of monoclonal antibody to CCDC115 on formalin-fixed paraffin-embedded human breast. [antibody concentration 1.5 ug/ml]

[Protocol Download](#)

- Sandwich ELISA (Recombinant protein)

Detection limit for recombinant GST tagged CCDC115 is 0.3 ng/ml as a capture antibody.

[Protocol Download](#)

- ELISA

Gene Info — CCDC115

| | |
|---------------|-----------------------|
| Entrez GeneID | 84317 |
|---------------|-----------------------|

| | |
|---------------------|----------------------------|
| GeneBank Accession# | BC006429.1 |
|---------------------|----------------------------|

| | |
|--------------------|----------------------------|
| Protein Accession# | AAH06429.1 |
|--------------------|----------------------------|

| | |
|-----------|---------|
| Gene Name | CCDC115 |
|-----------|---------|

| | |
|------------|--------------------------|
| Gene Alias | FLJ30131, MGC12981, ccp1 |
|------------|--------------------------|

| | |
|------------------|-----------------------------------|
| Gene Description | coiled-coil domain containing 115 |
|------------------|-----------------------------------|

| | |
|---------------|---------------------------|
| Gene Ontology | Hyperlink |
|---------------|---------------------------|

| | |
|--------------------|--------------------|
| Other Designations | OTTHUMP00000162399 |
|--------------------|--------------------|