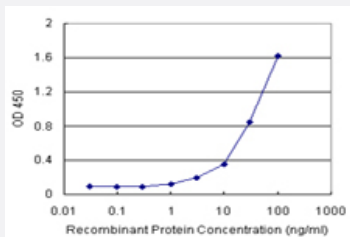


CAMKK1 (Human) Matched Antibody Pair

Catalog # H00084254-AP21

Size 1 Set

Applications



Sandwich ELISA detection sensitivity ranging from 3 ng/ml to 100 ng/ml.

Specification

Product Description	This antibody pair set comes with a matched antibody pair to detect and quantify the protein level of human CAMKK1.
Reactivity	Human
Interspecies Antigen Sequence	Mouse (86); Rat (86)
Quality Control Testing	Standard curve using recombinant protein (H00084254-P01) as an analyte. Sandwich ELISA detection sensitivity ranging from 3 ng/ml to 100 ng/ml.
Supplied Product	Antibody pair set content: 1. Capture antibody: rabbit MaxPab® affinity purified polyclonal anti-CAMKK1 (100 ug) 2. Detection antibody: mouse purified polyclonal anti-CAMKK1 (20 ug) *Reagents are sufficient for at least 1-2 x 96 well plates using recommended protocols.
Storage Instruction	Store reagents of the antibody pair set at -20°C or lower. Please aliquot to avoid repeated freeze thaw cycle. Reagents should be returned to -20°C storage immediately after use.

Applications

- ELISA Pair (Recombinant protein)

[Protocol Download](#)

Gene Info — CAMKK1

Entrez GeneID [84254](#)

Gene Name CAMKK1

Gene Alias CAMKKA, DKFZp761M0423, MGC34095

Gene Description calcium/calmodulin-dependent protein kinase kinase 1, alpha

Omim ID [611411](#)

Gene Ontology [Hyperlink](#)

Gene Summary The product of this gene belongs to the Serine/Threonine protein kinase family, and to the Ca(2+)/calmodulin-dependent protein kinase subfamily. This protein plays a role in the calcium/calmodulin-dependent (CaM) kinase cascade. Three transcript variants encoding two distinct isoforms have been identified for this gene. [provided by RefSeq]

Other Designations CAMKK alpha protein|OTTHUMP00000115904|calcium/calmodulin-dependent protein kinase 1 alpha

Pathway

- [Adipocytokine signaling pathway](#)

Disease

- [Adenocarcinoma](#)
- [Esophageal Neoplasms](#)
- [Genetic Predisposition to Disease](#)
- [Kidney Failure](#)
- [Lung Neoplasms](#)