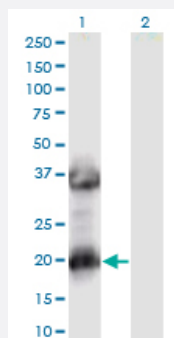


MAF1 monoclonal antibody (M02), clone 2D6

Catalog # H00084232-M02

Size 100 ug

Applications

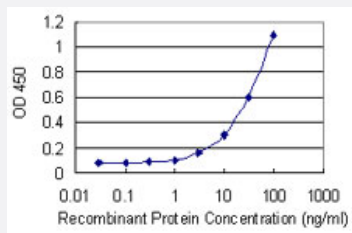


Western Blot (Transfected lysate)

Western Blot analysis of MAF1 expression in transfected 293T cell line by MAF1 monoclonal antibody (M02), clone 2D6.

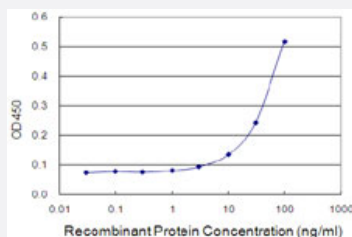
Lane 1: MAF1 transfected lysate (Predicted MW: 28.9 kDa).

Lane 2: Non-transfected lysate.



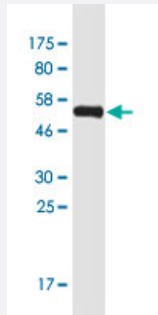
Sandwich ELISA (Recombinant protein)

Detection limit for recombinant GST tagged MAF1 is 1 ng/ml as a capture antibody.



Sandwich ELISA (Recombinant protein)

Detection limit for recombinant GST tagged MAF1 is 3 ng/ml as a capture antibody.



Western Blot detection against Immunogen (55.3 KDa) .

Specification

Product Description	Mouse monoclonal antibody raised against a full-length recombinant MAF1.
Immunogen	MAF1 (AAH31273.1, 1 a.a. ~ 256 a.a) full-length recombinant protein with GST tag. MW of the GST tag alone is 26 KDa.
Sequence	MKLENSSF EAINSQLTVETGDAHIIGRIESYSCKMAGDDKHMFKQFCQEGQPHVLEALSPPQTS GLSPSRLSKSQGGEEEGPLSDKCSRKTLFYLIATL NESFRPDYDFSTARSHEFSREPSLSWVNA VNCSLFSAVREDFKDLKPQLWNAVDEEICLAECDIYSNPDLDSDPFGEDGSLWSFNFFYNKR LKRIVFFSCRSISGSTYTPSEAGNELDMELGEEVEEESRSRGSGAEETSTMEEDRVPVICI
Host	Mouse
Reactivity	Human
Interspecies Antigen Sequence	Mouse (93); Rat (93)
Isotype	IgG1 Kappa
Quality Control Testing	Antibody Reactive Against Recombinant Protein. Western Blot detection against Immunogen (55.3 KDa) .
Storage Buffer	In 1x PBS, pH 7.4
Storage Instruction	Store at -20°C or lower. Aliquot to avoid repeated freezing and thawing.

Applications

- Western Blot (Transfected lysate)

Western Blot analysis of MAF1 expression in transfected 293T cell line by MAF1 monoclonal antibody (M02), clone 2D6.

Lane 1: MAF1 transfected lysate (Predicted MW: 28.9 KDa).

Lane 2: Non-transfected lysate.

[Protocol Download](#)

- Western Blot (Recombinant protein)

[Protocol Download](#)

- Sandwich ELISA (Recombinant protein)

Detection limit for recombinant GST tagged MAF1 is 1 ng/ml as a capture antibody.

[Protocol Download](#)

- Sandwich ELISA (Recombinant protein)

Detection limit for recombinant GST tagged MAF1 is 3 ng/ml as a capture antibody.

[Protocol Download](#)

- ELISA

Gene Info — MAF1

Entrez GeneID [84232](#)

GeneBank Accession# [BC031273.1](#)

Protein Accession# [AAH31273.1](#)

Gene Name MAF1

Gene Alias MGC20332, MGC31779, MGC39758

Gene Description MAF1 homolog (S. cerevisiae)

Omim ID [610210](#)

Gene Ontology [Hyperlink](#)

Gene Summary

This gene encodes a protein that is similar to Maf1, a *Saccharomyces cerevisiae* protein highly conserved in eukaryotic cells. Yeast Maf1 is a negative effector of RNA polymerase III (Pol III). It responds to changes in the cellular environment and represses pol III transcription. Biochemical studies identified the initiation factor TFIIIB as a target for Maf1-dependent repression. [provided by RefSeq]

Other Designations

MAF1 protein|homolog of yeast MAF1