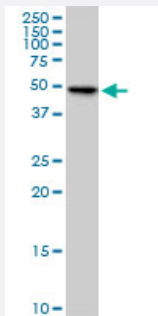


FLJ23356 monoclonal antibody (M03), clone 6F10

Catalog # H00084197-M03

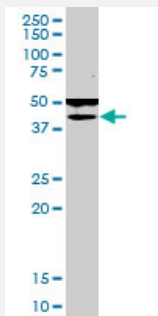
Size 100 ug

Applications



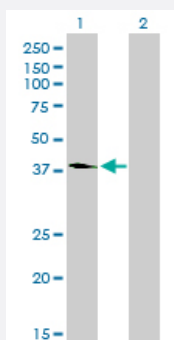
Western Blot (Cell lysate)

FLJ23356 monoclonal antibody (M03), clone 6F10. Western Blot analysis of FLJ23356 expression in HeLa(Cat # L013V1).



Western Blot (Cell lysate)

FLJ23356 monoclonal antibody (M03), clone 6F10. Western Blot analysis of FLJ23356 expression in HepG2(Cat # L019V1).

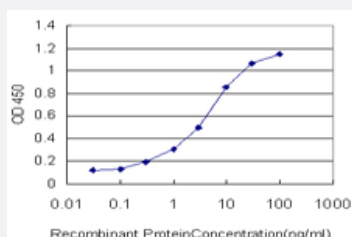


Western Blot (Transfected lysate)

Western Blot analysis of FLJ23356 expression in transfected 293T cell line by FLJ23356 monoclonal antibody (M03), clone 6F10.

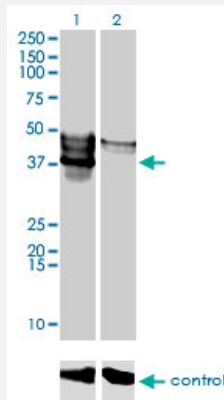
Lane 1: FLJ23356 transfected lysate(38.5 KDa).

Lane 2: Non-transfected lysate.



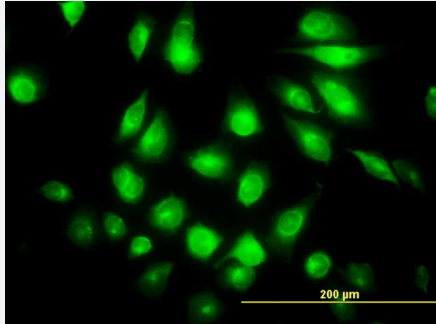
Sandwich ELISA (Recombinant protein)

Detection limit for recombinant GST tagged FLJ23356 is approximately 0.1ng/ml as a capture antibody.



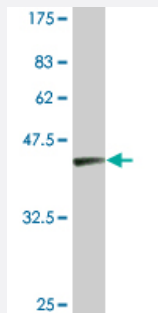
RNAi Knockdown (Antibody validated)

Western blot analysis of FLJ23356 over-expressed 293 cell line, cotransfected with FLJ23356 Validated Chimera RNAi (Cat # H00084197-R01V) (Lane 2) or non-transfected control (Lane 1). Blot probed with FLJ23356 monoclonal antibody (M03), clone 6F10 (Cat # H00084197-M03). GAPDH (36.1 kDa) used as specificity and loading control.



Immunofluorescence

Immunofluorescence of monoclonal antibody to FLJ23356 on HeLa cell. [antibody concentration 10 ug/ml]



Western Blot detection against Immunogen (36.74 KDa) .

Specification

Product Description	Mouse monoclonal antibody raised against a partial recombinant FLJ23356.
Immunogen	FLJ23356 (NP_115613, 251 a.a. ~ 350 a.a) partial recombinant protein with GST tag. MW of the GST tag alone is 26 KDa.
Sequence	GDFVAPEQLWPYGEDVPFHDDLMPYDEKIDWKIPDISSFLLGHIEGSDMVRFHFLFDIHKACKSQ TPSERPTAQDVLETYQKVLDLTRDAMMSQAREML
Host	Mouse
Reactivity	Human
Interspecies Antigen Sequence	Mouse (81); Rat (79)

Isotype	IgG1 Kappa
Quality Control Testing	Antibody Reactive Against Recombinant Protein. Western Blot detection against Immunogen (36.74 KDa) .
Storage Buffer	In 1x PBS, pH 7.4
Storage Instruction	Store at -20°C or lower. Aliquot to avoid repeated freezing and thawing.

Applications

- Western Blot (Cell lysate)

FLJ23356 monoclonal antibody (M03), clone 6F10. Western Blot analysis of FLJ23356 expression in HeLa(Cat # L013V1).

[Protocol Download](#)

- Western Blot (Cell lysate)

FLJ23356 monoclonal antibody (M03), clone 6F10. Western Blot analysis of FLJ23356 expression in HepG2(Cat # L019V1).

[Protocol Download](#)

- Western Blot (Transfected lysate)

Western Blot analysis of FLJ23356 expression in transfected 293T cell line by FLJ23356 monoclonal antibody (M03), clone 6F10.

Lane 1: FLJ23356 transfected lysate(38.5 KDa).

Lane 2: Non-transfected lysate.

[Protocol Download](#)

- Western Blot (Recombinant protein)

[Protocol Download](#)

- Sandwich ELISA (Recombinant protein)

Detection limit for recombinant GST tagged FLJ23356 is approximately 0.1ng/ml as a capture antibody.

[Protocol Download](#)

- ELISA

- RNAi Knockdown (Antibody validated)

Western blot analysis of FLJ23356 over-expressed 293 cell line, cotransfected with FLJ23356 Validated Chimera RNAi (Cat # H00084197-R01V) (Lane 2) or non-transfected control (Lane 1). Blot probed with FLJ23356 monoclonal antibody (M03), clone 6F10 (Cat # H00084197-M03). GAPDH (36.1 kDa) used as specificity and loading control.

[Protocol Download](#)

- Immunofluorescence

Immunofluorescence of monoclonal antibody to FLJ23356 on HeLa cell. [antibody concentration 10 ug/ml]

Gene Info — SGK196

Entrez GeneID	84197
---------------	-----------------------

GeneBank Accession#	NM_032237
---------------------	---------------------------

Protein Accession#	NP_115613
--------------------	---------------------------

Gene Name	SGK196
-----------	--------

Gene Alias	FLJ23356, MGC126597
------------	---------------------

Gene Description	protein kinase-like protein SgK196
------------------	------------------------------------

Gene Ontology	Hyperlink
---------------	---------------------------

Other Designations	Sugen kinase 196
--------------------	------------------