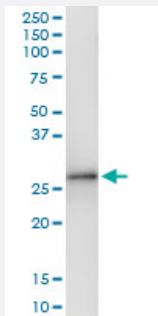


SLA2 (Human) IP-WB Antibody Pair

Catalog # H00084174-PW1

Size 1 Set

Applications



Immunoprecipitation of SLA2 transfected lysate using rabbit polyclonal anti-SLA2 and Protein A Magnetic Bead ([U0007](#)), and immunoblotted with mouse polyclonal anti-SLA2.

Specification

Product Description	This IP-WB antibody pair set comes with one antibody for immunoprecipitation and another to detect the precipitated protein in western blot.
Reactivity	Human
Quality Control Testing	Immunoprecipitation-Western Blot (IP-WB) Immunoprecipitation of SLA2 transfected lysate using rabbit polyclonal anti-SLA2 and Protein A Magnetic Bead (U0007), and immunoblotted with mouse polyclonal anti-SLA2.
Supplied Product	Antibody pair set content: 1. Antibody pair for IP: rabbit polyclonal anti-SLA2 (300 ul) 2. Antibody pair for WB: mouse polyclonal anti-SLA2 (50 ul)
Storage Instruction	Store reagents of the antibody pair set at -20°C or lower. Please aliquot to avoid repeated freeze thaw cycle. Reagents should be returned to -20°C storage immediately after use.

Applications

- Immunoprecipitation-Western Blot

[Protocol Download](#)

Gene Info — SLA2

Entrez GeneID [84174](#)**Gene Name** SLA2**Gene Alias** C20orf156, FLJ21992, MGC49845, SLAP-2, SLAP2**Gene Description** Src-like-adaptor 2**Omim ID** [606577](#)**Gene Ontology** [Hyperlink](#)

Gene Summary This gene encodes a member of the SLAP family of adapter proteins. The encoded protein may play an important receptor-proximal role in downregulating T and B cell-mediated responses and inhibits antigen receptor-induced calcium mobilization. This protein interacts with Cas-Br-M (murine) ecotropic retroviral transforming sequence c. Two transcript variants encoding distinct isoforms have been identified for this gene. [provided by RefSeq]

Other Designations Src-like adapter protein-2