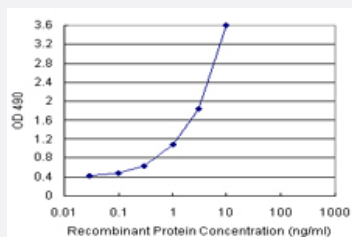


# SLA2 (Human) Matched Antibody Pair

Catalog # H00084174-AP21

Size 1 Set

## Applications



Sandwich ELISA detection sensitivity ranging from 0.03 ng/ml to 100 ng/ml.

## Specification

### Product Description

This antibody pair set comes with a matched antibody pair to detect and quantify the protein level of human SLA2.

### Reactivity

Human

### Quality Control Testing

Standard curve using recombinant protein ( H00084174-P01 ) as an analyte.  
Sandwich ELISA detection sensitivity ranging from 0.03 ng/ml to 100 ng/ml.

### Supplied Product

Antibody pair set content:  
1. Capture antibody: rabbit MaxPab® affinity purified polyclonal anti-SLA2 (100 ug)  
2. Detection antibody: mouse polyclonal anti-SLA2 (40 ul)  
\*Reagents are sufficient for at least 3-5 x 96 well plates using recommended protocols.

### Storage Instruction

Store reagents of the antibody pair set at -20°C or lower. Please aliquot to avoid repeated freeze thaw cycle. Reagents should be returned to -20°C storage immediately after use.

## Applications

- ELISA Pair (Recombinant protein)

[Protocol Download](#)

## Gene Info — SLA2

**Entrez GeneID** [84174](#)**Gene Name** SLA2**Gene Alias** C20orf156, FLJ21992, MGC49845, SLAP-2, SLAP2**Gene Description** Src-like-adaptor 2**Omim ID** [606577](#)**Gene Ontology** [Hyperlink](#)

**Gene Summary** This gene encodes a member of the SLAP family of adapter proteins. The encoded protein may play an important receptor-proximal role in downregulating T and B cell-mediated responses and inhibits antigen receptor-induced calcium mobilization. This protein interacts with Cas-Br-M (murine) ecotropic retroviral transforming sequence c. Two transcript variants encoding distinct isoforms have been identified for this gene. [provided by RefSeq]

**Other Designations** Src-like adapter protein-2