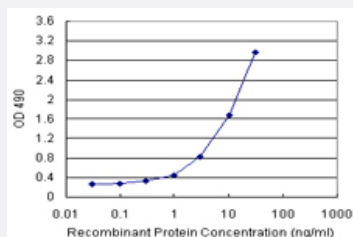


SLA2 (Human) Matched Antibody Pair

Catalog # H00084174-AP11

Size 1 Set

Applications



Sandwich ELISA detection sensitivity ranging from 0.3 ng/ml to 100 ng/ml.

Specification

Product Description

This antibody pair set comes with a matched antibody pair to detect and quantify the protein level of human SLA2.

Reactivity

Human

Quality Control Testing

Standard curve using recombinant protein (H00084174-P01) as an analyte.
Sandwich ELISA detection sensitivity ranging from 0.3 ng/ml to 100 ng/ml.

Supplied Product

Antibody pair set content:
1. Capture antibody: rabbit MaxPab® affinity purified polyclonal anti-SLA2 (100 ug)
2. Detection antibody: mouse monoclonal anti-SLA2, IgG1 Kappa (20 ug)
*Reagents are sufficient for at least 1-2 x 96 well plates using recommended protocols.

Storage Instruction

Store reagents of the antibody pair set at -20°C or lower. Please aliquot to avoid repeated freeze thaw cycle. Reagents should be returned to -20°C storage immediately after use.

Applications

- ELISA Pair (Recombinant protein)

[Protocol Download](#)

Gene Info — SLA2

Entrez GeneID	84174
Gene Name	SLA2
Gene Alias	C20orf156, FLJ21992, MGC49845, SLAP-2, SLAP2
Gene Description	Src-like-adaptor 2
Omim ID	606577
Gene Ontology	Hyperlink
Gene Summary	<p>This gene encodes a member of the SLAP family of adapter proteins. The encoded protein may play an important receptor-proximal role in downregulating T and B cell-mediated responses and inhibits antigen receptor-induced calcium mobilization. This protein interacts with Cas-Br-M (murine) ecotropic retroviral transforming sequence c. Two transcript variants encoding distinct isoforms have been identified for this gene. [provided by RefSeq]</p>
Other Designations	Src-like adapter protein-2