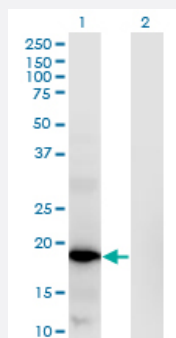


# RNASEH2C monoclonal antibody (M02), clone 5D6

Catalog # H00084153-M02

Size 100 ug

## Applications

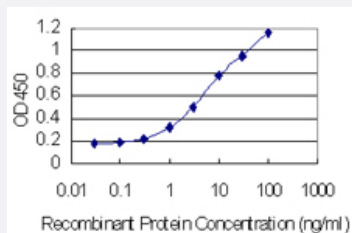


### Western Blot (Transfected lysate)

Western Blot analysis of RNASEH2C expression in transfected 293T cell line by RNASEH2C monoclonal antibody (M02), clone 5D6.

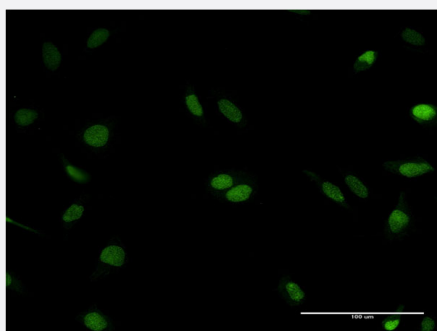
Lane 1: RNASEH2C transfected lysate (Predicted MW: 17.8 KDa).

Lane 2: Non-transfected lysate.



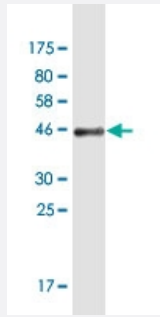
### Sandwich ELISA (Recombinant protein)

Detection limit for recombinant GST tagged RNASEH2C is 0.1 ng/ml as a capture antibody.



### Immunofluorescence

Immunofluorescence of monoclonal antibody to RNASEH2C on HeLa cell .  
[antibody concentration 10 ug/ml]



Western Blot detection against Immunogen (44.2 KDa) .

## Specification

<b>Product Description</b>	Mouse monoclonal antibody raised against a full-length recombinant RNASEH2C.
<b>Immunogen</b>	RNASEH2C (NP_115569.2, 1 a.a. ~ 164 a.a) full-length recombinant protein with GST tag. MW of the GST tag alone is 26 KDa.
<b>Sequence</b>	MESGDEAAIERHRVHLRSATLRDAVPATLHLLPCEVAVDGPAPVGRFFTPAIRQGPEGLEVSFRGRCLRGEEVAVPPGLVGYYMVTEEEKKVS MGKPDPLRDSGTDDQEEELERDFDRFIGATANFSRFTLWGLETIPGPD AKVRGALTWPSLAAAIHAQVPED
<b>Host</b>	Mouse
<b>Reactivity</b>	Human
<b>Interspecies Antigen Sequence</b>	Rat (65)
<b>Isotype</b>	IgG2a Kappa
<b>Quality Control Testing</b>	Antibody Reactive Against Recombinant Protein. Western Blot detection against Immunogen (44.2 KDa) .
<b>Storage Buffer</b>	In 1x PBS, pH 7.4
<b>Storage Instruction</b>	Store at -20°C or lower. Aliquot to avoid repeated freezing and thawing.

## Applications

- Western Blot (Transfected lysate)

Western Blot analysis of RNASEH2C expression in transfected 293T cell line by RNASEH2C monoclonal antibody (M02), clone 5D6.

Lane 1: RNASEH2C transfected lysate (Predicted MW: 17.8 KDa).

Lane 2: Non-transfected lysate.

[Protocol Download](#)

- Western Blot (Recombinant protein)

[Protocol Download](#)

- Sandwich ELISA (Recombinant protein)

Detection limit for recombinant GST tagged RNASEH2C is 0.1 ng/ml as a capture antibody.

[Protocol Download](#)

- ELISA

- Immunofluorescence

Immunofluorescence of monoclonal antibody to RNASEH2C on HeLa cell . [antibody concentration 10 ug/ml]

## Gene Info — RNASEH2C

Entrez GeneID [84153](#)

GeneBank Accession# [NM\\_032193.3](#)

Protein Accession# [NP\\_115569.2](#)

Gene Name RNASEH2C

Gene Alias AGS3, AYP1, FLJ20974, MGC22934

Gene Description ribonuclease H2, subunit C

Omim ID [610329](#) [610330](#)

Gene Ontology [Hyperlink](#)

**Gene Summary** This gene encodes a ribonuclease H subunit that can cleave ribonucleotides from RNA:DNA duplexes. Mutations in this gene cause Aicardi-Goutieres syndrome-3, a disease that causes severe neurologic dysfunction. A pseudogene for this gene has been identified on chromosome Y, near the sex determining region Y (SRY) gene. [provided by RefSeq]

**Other Designations**

RNase H1 small subunit

**Pathway**

- [DNA replication](#)