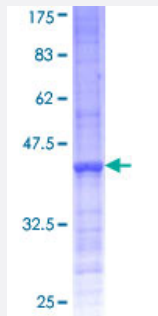


PCGF6 (Human) Recombinant Protein (Q01)

Catalog # H00084108-Q01

Size 25 ug, 10 ug

Applications



Specification

Product Description	Human PCGF6 partial ORF (NP_001011663, 225 a.a. - 324 a.a.) recombinant protein with GST-tag at N-terminal.
Sequence	AVPQPVPSKGRSKKVLESVFRIPPELDMSLLLEFIGANEGTGHFKPLEKKFVRVSGEATIGHVEK FLRRKMGLDPACQVDIICGDHLLLEQYQTLREIRR
Host	Wheat Germ (in vitro)
Theoretical MW (kDa)	36.74
Interspecies Antigen Sequence	Mouse (87); Rat (86)
Preparation Method	in vitro wheat germ expression system
Purification	Glutathione Sepharose 4 Fast Flow
Quality Control Testing	12.5% SDS-PAGE Stained with Coomassie Blue.
Storage Buffer	50 mM Tris-HCl, 10 mM reduced Glutathione, pH=8.0 in the elution buffer.
Storage Instruction	Store at -80°C. Aliquot to avoid repeated freezing and thawing.
Note	Best use within three months from the date of receipt of this protein.

Applications

- Enzyme-linked Immunoabsorbent Assay
- Western Blot (Recombinant protein)
- Antibody Production
- Protein Array

Gene Info — PCGF6

Entrez GeneID [84108](#)

GeneBank Accession# [NM_001011663](#)

Protein Accession# [NP_001011663](#)

Gene Name PCGF6

Gene Alias MBLR, MGC15678, MGC17541, RNF134

Gene Description polycomb group ring finger 6

Omim ID [607816](#)

Gene Ontology [Hyperlink](#)

Gene Summary The protein encoded by this gene contains a RING finger motif, which is most closely related to those of polycomb group (PcG) proteins RNF110/MEL-18 and BMI1. PcG proteins are known to form protein complexes and function as transcription repressors. This protein has been shown to interact with some PcG proteins and act as a transcription repressor. The activity of this protein is found to be regulated by cell cycle dependent phosphorylation. Alternatively spliced transcript variants encoding different isoforms have been identified. [provided by RefSeq]

Other Designations Mel18 and Bmi1-like RING finger protein|OTTHUMP00000020394|OTTHUMP00000020395|ring finger protein 134