

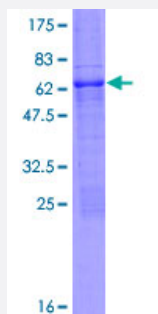
Full-Length

## PCGF6 (Human) Recombinant Protein (P01)

Catalog # H00084108-P01

Size 25 ug, 10 ug

### Applications



### Specification

<b>Product Description</b>	Human PCGF6 full-length ORF ( AAH07602.1, 1 a.a. - 277 a.a.) recombinant protein with GST-tag at N-terminal.
<b>Sequence</b>	MEGVAVVTAGSVGAAKTEGAAALPPPPPPVSPPALTPAPAAGEEGPAPLSETGAPGCSGSRP PELEPERSLGRFRGRFEDEDEEELEEEEEEEEEEDMSHFSLRLEGGRQDSEDEEERLINL SELTPIYILCSICKGYLIDATTITECLHTFCKSCVRHFYYSNRCPKCNIVVHQTQPLYNISANEGTGHFK PLEKKFVRVSGEATIGHVEKFLRRKMGLDPACQVDIICGDHLLQYQTLREIRRAIGDAAMQDGLL VLHYGLVVSPKIT
<b>Host</b>	Wheat Germ (in vitro)
<b>Theoretical MW (kDa)</b>	56.8
<b>Interspecies Antigen Sequence</b>	Mouse (87); Rat (86)
<b>Preparation Method</b>	<a href="#">in vitro wheat germ expression system</a>
<b>Purification</b>	Glutathione Sepharose 4 Fast Flow
<b>Quality Control Testing</b>	12.5% SDS-PAGE Stained with Coomassie Blue.
<b>Storage Buffer</b>	50 mM Tris-HCl, 10 mM reduced Glutathione, pH=8.0 in the elution buffer.

**Storage Instruction**

Store at -80°C. Aliquot to avoid repeated freezing and thawing.

**Note**

Best use within three months from the date of receipt of this protein.

## Applications

- Enzyme-linked Immunoabsorbent Assay
- Western Blot (Recombinant protein)
- Antibody Production
- Protein Array

## Gene Info — PCGF6

**Entrez GeneID**[84108](#)**GeneBank Accession#**[BC007602.1](#)**Protein Accession#**[AAH07602.1](#)**Gene Name**

PCGF6

**Gene Alias**

MBLR, MGC15678, MGC17541, RNF134

**Gene Description**

polycomb group ring finger 6

**Omim ID**[607816](#)**Gene Ontology**[Hyperlink](#)**Gene Summary**

The protein encoded by this gene contains a RING finger motif, which is most closely related to those of polycomb group (PcG) proteins RNF110/MEL-18 and BMI1. PcG proteins are known to form protein complexes and function as transcription repressors. This protein has been shown to interact with some PcG proteins and act as a transcription repressor. The activity of this protein is found to be regulated by cell cycle dependent phosphorylation. Alternatively spliced transcript variants encoding different isoforms have been identified. [provided by RefSeq]

**Other Designations**

Mel18 and Bmi1-like RING finger protein|OTTHUMP00000020394|OTTHUMP00000020395|ring finger protein 134