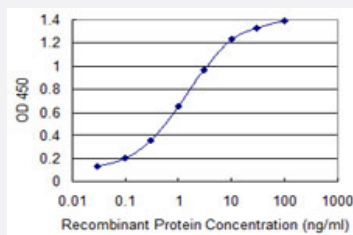


# TKTL2 monoclonal antibody (M01), clone 5E2

Catalog # H00084076-M01

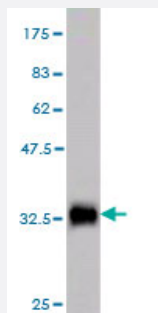
Size 100 ug

## Applications



### Sandwich ELISA (Recombinant protein)

Detection limit for recombinant GST tagged TKTL2 is 0.03 ng/ml as a capture antibody.



Western Blot detection against Immunogen (32.56 KDa) .

## Specification

Product Description	Mouse monoclonal antibody raised against a partial recombinant TKTL2.
Immunogen	TKTL2 (NP_115512, 59 a.a. ~ 120 a.a) partial recombinant protein with GST tag. MW of the GST tag alone is 26 KDa.
Sequence	YKQTDPEHPDNDRLFILSRGHAAPILYAAWVEVGDISDLLNLRKLHSDLERHPTPRLPFVD
Host	Mouse
Reactivity	Human
Interspecies Antigen Sequence	Mouse (84); Rat (84)

Isotype	IgG2a Kappa
Quality Control Testing	Antibody Reactive Against Recombinant Protein. Western Blot detection against Immunogen (32.56 KDa) .
Storage Buffer	In 1x PBS, pH 7.4
Storage Instruction	Store at -20°C or lower. Aliquot to avoid repeated freezing and thawing.

## Applications

- Western Blot (Recombinant protein)

[Protocol Download](#)

- Sandwich ELISA (Recombinant protein)

Detection limit for recombinant GST tagged TKTL2 is 0.03 ng/ml as a capture antibody.

[Protocol Download](#)

- ELISA

## Gene Info — TKTL2

Entrez GeneID	<a href="#">84076</a>
GeneBank Accession#	<a href="#">NM_032136</a>
Protein Accession#	<a href="#">NP_115512</a>
Gene Name	TKTL2
Gene Alias	DKFZp434L1717, FLJ32975
Gene Description	transketolase-like 2
Gene Ontology	<a href="#">Hyperlink</a>
Other Designations	-

## Pathway

- [Biosynthesis of alkaloids derived from shikimate pathway](#)

- [Biosynthesis of phenylpropanoids](#)
- [Biosynthesis of plant hormones](#)
- [Carbon fixation in photosynthetic organisms](#)
- [Metabolic pathways](#)
- [Pentose phosphate pathway](#)