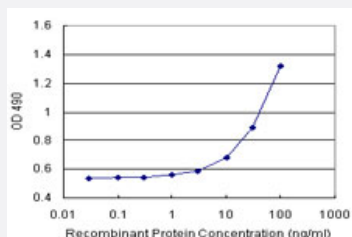


KIRREL2 (Human) Matched Antibody Pair

Catalog # H00084063-AP21 Size 1 Set

Applications



Sandwich ELISA detection sensitivity ranging from 1 ng/ml to 100 ng/ml.

Specification

Product Description	This antibody pair set comes with a matched antibody pair to detect and quantify the protein level of human KIRREL2.
Reactivity	Human
Interspecies Antigen Sequence	Mouse (71); Rat (71)
Quality Control Testing	Standard curve using recombinant protein (H00084063-P01) as an analyte. Sandwich ELISA detection sensitivity ranging from 1 ng/ml to 100 ng/ml.
Supplied Product	Antibody pair set content: 1. Capture antibody: rabbit MaxPab® affinity purified polyclonal anti-KIRREL2 (100 ug) 2. Detection antibody: mouse polyclonal anti-KIRREL2 (40 ul) *Reagents are sufficient for at least 3-5 x 96 well plates using recommended protocols.
Storage Instruction	Store reagents of the antibody pair set at -20°C or lower. Please aliquot to avoid repeated freeze thaw cycle. Reagents should be returned to -20°C storage immediately after use.

Applications

- [ELISA Pair \(Recombinant protein\)](#)

[Protocol Download](#)

Gene Info — KIRREL2

Entrez GeneID	84063
Gene Name	KIRREL2
Gene Alias	DKFZp564A1164, FILTRIN, MGC15718, NEPH3, NLG1
Gene Description	kin of IRRE like 2 (Drosophila)
Omim ID	607762
Gene Ontology	Hyperlink
Other Designations	kin of IRRE-like 2 kin of irregular chiasm-like 2 nephrin-like 3 nephrin-like gene 1

Disease

- [Cardiovascular Diseases](#)
- [Diabetes Mellitus](#)
- [Edema](#)