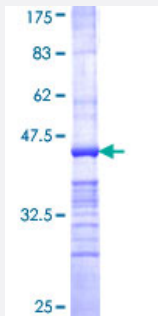


OBSCN (Human) Recombinant Protein (Q02)

Catalog # H00084033-Q02

Size 25 ug, 10 ug

Applications



Specification

Product Description	Human OBSCN partial ORF (XP_290923, 1551 a.a. - 1649 a.a.) recombinant protein with GST-tag at N-terminal.
Sequence	KAGMGPYSSPSEQVLLGGPSHLASEEESQGRSAQPLPSTKTFQAFQTQIQGRFSVVRQCWEKA SGRALAAKIIIPYHPKDKTAVLREYEALKGLRHPHLA
Host	Wheat Germ (in vitro)
Theoretical MW (kDa)	36.63
Interspecies Antigen Sequence	Mouse (87)
Preparation Method	in vitro wheat germ expression system
Purification	Glutathione Sepharose 4 Fast Flow
Quality Control Testing	12.5% SDS-PAGE Stained with Coomassie Blue.
Storage Buffer	50 mM Tris-HCl, 10 mM reduced Glutathione, pH=8.0 in the elution buffer.
Storage Instruction	Store at -80°C. Aliquot to avoid repeated freezing and thawing.
Note	Best use within three months from the date of receipt of this protein.

Applications

- Enzyme-linked Immunoabsorbent Assay
- Western Blot (Recombinant protein)
- Antibody Production
- Protein Array

Gene Info — OBSCN

Entrez GeneID	84033
GeneBank Accession#	XM_290923
Protein Accession#	XP_290923
Gene Name	OBSCN
Gene Alias	DKFZp666E245, FLJ14124, KIAA1556, KIAA1639, MGC120409, MGC120410, MGC120411, MGC120412, MGC138590, UNC89
Gene Description	obscurin, cytoskeletal calmodulin and titin-interacting RhoGEF
Omim ID	608616
Gene Ontology	Hyperlink
Gene Summary	The obscurin gene spans more than 150 kb, contains over 80 exons and encodes a protein of approximately 720 kDa. The encoded protein contains 68 Ig domains, 2 fibronectin domains, 1 calcium/calmodulin-binding domain, 1 RhoGEF domain with an associated PH domain, and 2 serine-threonine kinase domains. This protein belongs to the family of giant sacromeric signaling proteins that includes titin and nebulin, and may have a role in the organization of myofibrils during assembly and may mediate interactions between the sarcoplasmic reticulum and myofibrils. Alternatively spliced transcript variants encoding different isoforms have been identified. [provided by RefSeq]
Other Designations	obscurin, myosin light chain kinase obscurin-MLCK obscurin-RhoGEF

Disease

- [Tobacco Use Disorder](#)