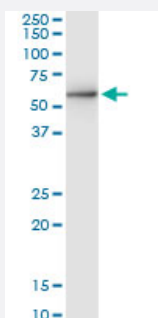


# STK40 (Human) IP-WB Antibody Pair

Catalog # H00083931-PW2

Size 1 Set

## Applications



Immunoprecipitation of STK40 transfected lysate using rabbit polyclonal anti-STK40 and Protein A Magnetic Bead ([U0007](#)), and immunoblotted with mouse purified polyclonal anti-STK40.

## Specification

<b>Product Description</b>	This IP-WB antibody pair set comes with one antibody for immunoprecipitation and another to detect the precipitated protein in western blot.
<b>Reactivity</b>	Human
<b>Interspecies Antigen Sequence</b>	Mouse (97); Rat (97)
<b>Quality Control Testing</b>	Immunoprecipitation-Western Blot (IP-WB) Immunoprecipitation of STK40 transfected lysate using rabbit polyclonal anti-STK40 and Protein A Magnetic Bead ( <a href="#">U0007</a> ), and immunoblotted with mouse purified polyclonal anti-STK40.
<b>Supplied Product</b>	Antibody pair set content: 1. Antibody pair for IP: rabbit polyclonal anti-STK40 (300 ul) 2. Antibody pair for WB: mouse purified polyclonal anti-STK40 (50 ug)
<b>Storage Instruction</b>	Store reagents of the antibody pair set at -20°C or lower. Please aliquot to avoid repeated freeze thaw cycle. Reagents should be returned to -20°C storage immediately after use.

## Applications

- Immunoprecipitation-Western Blot

[Protocol Download](#)

## Gene Info — STK40

**Entrez GeneID** [83931](#)

**Gene Name** STK40

**Gene Alias** MGC4796, RP11-268J15.4, SHIK, SgK495

**Gene Description** serine/threonine kinase 40

**Omim ID** [609437](#)

**Gene Ontology** [Hyperlink](#)

**Other Designations** 2310004N11Rik|OTTHUMP00000009948|OTTHUMP00000009951|Ser/Thr-like kinase

## Disease

- [Kidney Failure](#)