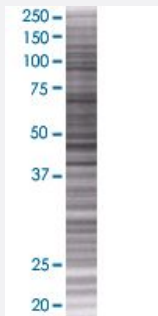


# ROPN1L 293T Cell Transient Overexpression Lysate(Denatured)

Catalog # H00083853-T01

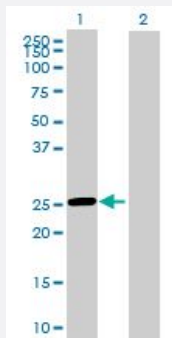
Size 100 uL

## Applications



### SDS-PAGE Gel

ROPN1L transfected lysate.



### Western Blot

Lane 1: ROPN1L transfected lysate ( 26.2 KDa)

Lane 2: Non-transfected lysate.

## Specification

Transfected Cell Line	293T
Plasmid	pCMV-ROPN1L full-length
Host	Human
Theoretical MW (kDa)	26.2
Interspecies Antigen Sequence	Mouse (79); Rat (78)

**Quality Control Testing**

Transient overexpression cell lysate was tested with Anti-ROPN1L antibody ([H00083853-B01](#)) by Western Blots.  
SDS-PAGE Gel  
ROPN1L transfected lysate.  
Western Blot  
Lane 1: ROPN1L transfected lysate ( 26.2 KDa)  
Lane 2: Non-transfected lysate.

**Storage Buffer**

1X Sample Buffer (50 mM Tris-HCl, 2% SDS, 10% glycerol, 300 mM 2-mercaptoethanol, 0.01% Bromophenol blue)

**Storage Instruction**

Store at -80°C. Aliquot to avoid repeated freezing and thawing.

## Applications

- Western Blot

## Gene Info — ROPN1L

**Entrez GeneID**[83853](#)**GeneBank Accession#**[BC014607](#)**Protein Accession#**[AAH14607.1](#)**Gene Name**

ROPN1L

**Gene Alias**

ASP, FLJ23003, FLJ25776

**Gene Description**

ropporin 1-like

**Gene Ontology**[Hyperlink](#)**Gene Summary**

The protein encoded by this gene is a sperm protein, which interacts with A-kinase anchoring protein, AKAP3, through the amphipathic helix region of AKAP3. Type II regulatory subunit of cAMP-dependent protein kinase (PKARII) also binds to this helix domain of AKAP3, which allows PKARII to be targeted to specific subcellular compartments. It is suggested that sperm contains several proteins that bind to AKAPs in a manner similar to PKARII, and this encoded protein may be one of them. [provided by RefSeq]

**Other Designations**

AKAP-associated sperm protein