

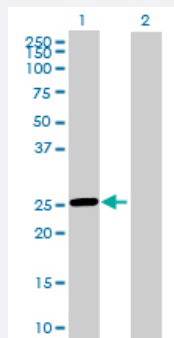
MaxPab®

ROPN1L MaxPab mouse polyclonal antibody (B01P)

Catalog # H00083853-B01P

Size 50 ug

Applications



Western Blot (Transfected lysate)

Western Blot analysis of ROPN1L expression in transfected 293T cell line ([H00083853-T01](#)) by ROPN1L MaxPab polyclonal antibody.

Lane 1: ROPN1L transfected lysate(25.3 KDa).

Lane 2: Non-transfected lysate.

Specification

Product Description	Mouse polyclonal antibody raised against a full-length human ROPN1L protein.
Immunogen	ROPN1L (AAH14607.1, 1 a.a. ~ 230 a.a) full-length human protein.
Sequence	MPLPDTMFCAQQIHIPPELPDILKQFTKAAIRTQPADVLRWSAGYFSALSRGDPLPVKDRMEMPT ATQKTDGTGLTQGLLKVLHKQCHHKRYVELTDLEQKWKNLCLPKEKFKALLQLDPCENKIKWINFL ALGCSMLGGSLNTALKHLCEILTDDREGGPARIPFKTFSYVYRYLARLDSVSPLETESYLASLKE NIDARKNGMIGLSDFFFPKRKLLESIENSEDVGH
Host	Mouse
Reactivity	Human
Interspecies Antigen Sequence	Mouse (79); Rat (78)
Quality Control Testing	Antibody reactive against mammalian transfected lysate.
Storage Buffer	In 1x PBS, pH 7.4
Storage Instruction	Store at -20°C or lower. Aliquot to avoid repeated freezing and thawing.

Applications

- Western Blot (Transfected lysate)

Western Blot analysis of ROPN1L expression in transfected 293T cell line ([H00083853-T01](#)) by ROPN1L MaxPab polyclonal antibody.

Lane 1: ROPN1L transfected lysate(25.3 KDa).

Lane 2: Non-transfected lysate.

[Protocol Download](#)

Gene Info — ROPN1L

Entrez GeneID	83853
---------------	-----------------------

GeneBank Accession#	BC014607
---------------------	--------------------------

Protein Accession#	AAH14607.1
--------------------	----------------------------

Gene Name	ROPN1L
-----------	--------

Gene Alias	ASP, FLJ23003, FLJ25776
------------	-------------------------

Gene Description	ropporin 1-like
------------------	-----------------

Gene Ontology	Hyperlink
---------------	---------------------------

Gene Summary	The protein encoded by this gene is a sperm protein, which interacts with A-kinase anchoring protein, AKAP3, through the amphipathic helix region of AKAP3. Type II regulatory subunit of cAMP-dependent protein kinase (PKARII) also binds to this helix domain of AKAP3, which allows PKARII to be targeted to specific subcellular compartments. It is suggested that sperm contains several proteins that bind to AKAPs in a manner similar to PKARII, and this encoded protein may be one of them. [provided by RefSeq]
--------------	--

Other Designations	AKAP-associated sperm protein
--------------------	-------------------------------