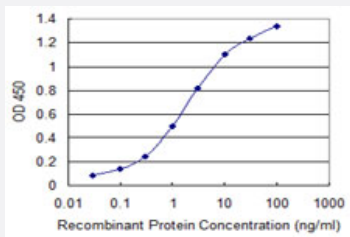


# CALN1 monoclonal antibody (M29), clone 2G5

Catalog # H00083698-M29

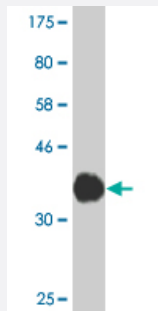
Size 100 ug

## Applications



### Sandwich ELISA (Recombinant protein)

Detection limit for recombinant GST tagged CALN1 is 0.03 ng/ml as a capture antibody.



Western Blot detection against Immunogen (33.55 KDa) .

## Specification

Product Description	Mouse monoclonal antibody raised against a partial recombinant CALN1.
Immunogen	CALN1 (AAH20200, 36 a.a. ~ 106 a.a) partial recombinant protein with GST tag. MW of the GST tag alone is 26 KDa.
Sequence	EELDEIREAFRVLDRDGNGFISKQELGMAMRSLGYMPSEVELAIIIMQRLDMDGDGQVDFDEFMTI LGPKLV
Host	Mouse
Reactivity	Human

**Interspecies Antigen Sequence**

Mouse (99); Rat (99)

**Isotype**

IgG1 Kappa

**Quality Control Testing**Antibody Reactive Against Recombinant Protein.  
Western Blot detection against Immunogen (33.55 KDa) .**Storage Buffer**

In 1x PBS, pH 7.4

**Storage Instruction**

Store at -20°C or lower. Aliquot to avoid repeated freezing and thawing.

## Applications

- Western Blot (Recombinant protein)

[Protocol Download](#)

- Sandwich ELISA (Recombinant protein)

Detection limit for recombinant GST tagged CALN1 is 0.03 ng/ml as a capture antibody.

[Protocol Download](#)

- ELISA

## Gene Info — CALN1

**Entrez GeneID**[83698](#)**GeneBank Accession#**[BC020200](#)**Protein Accession#**[AAH20200](#)**Gene Name**

CALN1

**Gene Alias**

-

**Gene Description**

calneuron 1

**Omim ID**[607176](#)**Gene Ontology**[Hyperlink](#)

**Gene Summary**

This gene encodes a protein with high similarity to the calcium-binding proteins of the calmodulin family. The encoded protein contains two EF-hand domains and potential calcium-binding sites. Alternative splicing results in multiple transcript variants. [provided by RefSeq]

**Other Designations**

OTTHUMP00000025405|OTTHUMP00000160216|calcium-binding protein CABP8

**Disease**

- [Tobacco Use Disorder](#)