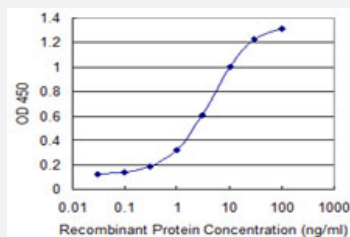


CALN1 monoclonal antibody (M07), clone 2G2

Catalog # H00083698-M07

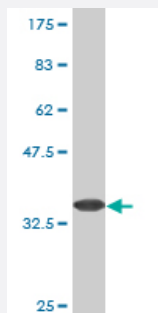
Size 100 ug

Applications



Sandwich ELISA (Recombinant protein)

Detection limit for recombinant GST tagged CALN1 is 0.1 ng/ml as a capture antibody.



Western Blot detection against Immunogen (33.55 KDa) .

Specification

Product Description	Mouse monoclonal antibody raised against a partial recombinant CALN1.
Immunogen	CALN1 (AAH20200, 36 a.a. ~ 106 a.a) partial recombinant protein with GST tag. MW of the GST tag alone is 26 KDa.
Sequence	EELDEIREAFRVLDRDGNGFISKQELGMAMRSLGYMPSEVELAIIIMQRLDMDGDGQVDFDEFMTI LGPKLV
Host	Mouse
Reactivity	Human

Interspecies Antigen Sequence	Mouse (99); Rat (99)
Isotype	IgG2a Kappa
Quality Control Testing	Antibody Reactive Against Recombinant Protein. Western Blot detection against Immunogen (33.55 KDa) .
Storage Buffer	In 1x PBS, pH 7.4
Storage Instruction	Store at -20°C or lower. Aliquot to avoid repeated freezing and thawing.

Applications

- Western Blot (Recombinant protein)

[Protocol Download](#)

- Sandwich ELISA (Recombinant protein)

Detection limit for recombinant GST tagged CALN1 is 0.1 ng/ml as a capture antibody.

[Protocol Download](#)

- ELISA

Gene Info — CALN1

Entrez GeneID	83698
GeneBank Accession#	BC020200
Protein Accession#	AAH20200
Gene Name	CALN1
Gene Alias	-
Gene Description	calneuron 1
Omim ID	607176
Gene Ontology	Hyperlink

Gene Summary

This gene encodes a protein with high similarity to the calcium-binding proteins of the calmodulin family. The encoded protein contains two EF-hand domains and potential calcium-binding sites. Alternative splicing results in multiple transcript variants. [provided by RefSeq]

Other Designations

OTTHUMP00000025405|OTTHUMP00000160216|calcium-binding protein CABP8

Disease

- [Tobacco Use Disorder](#)