

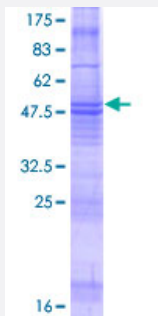
Full-Length

MS4A8B (Human) Recombinant Protein (P02)

Catalog # H00083661-P02

Size 25 ug, 10 ug

Applications



Specification

Product Description	Human MS4A8B full-length ORF (NP_113645.1, 1 a.a. - 250 a.a.) recombinant protein with GST-tag at N-terminal.
Sequence	MNSMTSAVPVANSVLVVAPHNGYPVTPGIMSHVPLYPNSQPQVHLVPGNPPSLVSNVNGQPVQ KALKEGKTLGAIQIIIGLAHIGLGSIMATVLVGEYLSISFYGGFPFWGGLWFIISGSLSVAAENQPYSYC LLSGSLGLNIVSAICSAVGIVLFTDLSIPHPYAYPDYYPYAWGVNPGMAISGVLLVFCLEFGIACAS SHFGCQLVCCQSSNVSVIYPNIYAANPVITPEPVTSPPSYSSEIQANK
Host	Wheat Germ (in vitro)
Theoretical MW (kDa)	52.7
Preparation Method	in vitro wheat germ expression system
Purification	Glutathione Sepharose 4 Fast Flow
Quality Control Testing	12.5% SDS-PAGE Stained with Coomassie Blue.
Storage Buffer	50 mM Tris-HCl, 10 mM reduced Glutathione, pH=8.0 in the elution buffer.
Storage Instruction	Store at -80°C. Aliquot to avoid repeated freezing and thawing.
Note	Best use within three months from the date of receipt of this protein.

Applications

- Enzyme-linked Immunoabsorbent Assay
- Western Blot (Recombinant protein)
- Antibody Production
- Protein Array

Gene Info — MS4A8B

Entrez GeneID [83661](#)

GeneBank Accession# [NM_031457.1](#)

Protein Accession# [NP_113645.1](#)

Gene Name MS4A8B

Gene Alias 4SPAN4, MS4A4

Gene Description membrane-spanning 4-domains, subfamily A, member 8B

Omim ID [606549](#)

Gene Ontology [Hyperlink](#)

Gene Summary This gene encodes a member of the membrane-spanning 4A gene family. Members of this protein family are characterized by common structural features and similar intron/exon splice boundaries and display unique expression patterns among hematopoietic cells and nonlymphoid tissues. The gene encoding this protein is localized to 11q12.3, among a cluster of family members. [provided by RefSeq]

Other Designations four-span transmembrane protein 4