

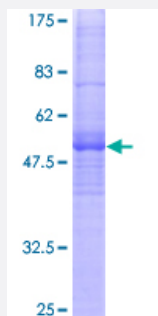
Full-Length

## MS4A8B (Human) Recombinant Protein (P01)

Catalog # H00083661-P01

Size 25 ug, 10 ug

### Applications



### Specification

#### Product Description

Human MS4A8B full-length ORF ( AAH22895, 1 a.a. - 250 a.a.) recombinant protein with GST-tag at N-terminal.

#### Sequence

MNSMTSAVPVANSVLVVAPHNGYPVTPGIMSHVPLYPNSQPQVHLVPGNPPSLVSNVNGQPVQ  
KALKEGKTLGAIQIIIGLARIGLGSIMATVLVGEYLSISFYGGFPFWGGLWFIISGSLSVAAENQPYSYC  
LLSGSLGLNIVSAICSAVGIVLITDLSIPHPYAYPDYYPYAWGVNPGMAISGVLLVFCLEFGIACAS  
SHFGCQLVCCQSSNVSVIYPNIYAANPVITPEPVTSPPSYSSEIQANK

#### Host

Wheat Germ (in vitro)

#### Theoretical MW (kDa)

53.24

#### Preparation Method

[in vitro wheat germ expression system](#)

#### Purification

Glutathione Sepharose 4 Fast Flow

#### Quality Control Testing

12.5% SDS-PAGE Stained with Coomassie Blue.

#### Storage Buffer

50 mM Tris-HCl, 10 mM reduced Glutathione, pH=8.0 in the elution buffer.

#### Storage Instruction

Store at -80°C. Aliquot to avoid repeated freezing and thawing.

#### Note

Best use within three months from the date of receipt of this protein.

## Applications

- Enzyme-linked Immunoabsorbent Assay
- Western Blot (Recombinant protein)
- Antibody Production
- Protein Array

## Gene Info — MS4A8B

Entrez GeneID [83661](#)

GeneBank Accession# [BC022895](#)

Protein Accession# [AAH22895](#)

Gene Name MS4A8B

Gene Alias 4SPAN4, MS4A4

Gene Description membrane-spanning 4-domains, subfamily A, member 8B

Omim ID [606549](#)

Gene Ontology [Hyperlink](#)

**Gene Summary** This gene encodes a member of the membrane-spanning 4A gene family. Members of this protein family are characterized by common structural features and similar intron/exon splice boundaries and display unique expression patterns among hematopoietic cells and nonlymphoid tissues. The gene encoding this protein is localized to 11q12.3, among a cluster of family members. [provided by RefSeq]

**Other Designations** four-span transmembrane protein 4