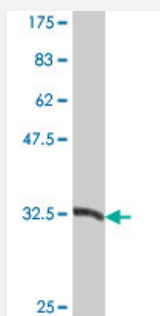


BCL2L12 polyclonal antibody (A01)

Catalog # H00083596-A01

Size 50 uL

Applications



Western Blot detection against Immunogen (37 KDa) .

Specification

Product Description	Mouse polyclonal antibody raised against a partial recombinant BCL2L12.
Immunogen	BCL2L12 (AAH07724, 174 a.a. ~ 273 a.a) partial recombinant protein with GST tag.
Sequence	RSKLVRLSSDSFARLVELFCSRDDSSRPSRACPGSPSPSPEPLARLALAMELSRRVAGLGGTLA GLSVEHVHSFTPWQAHGGWEGILAVSPVDLNLPLD
Host	Mouse
Reactivity	Human
Interspecies Antigen Sequence	Mouse (73); Rat (74)
Quality Control Testing	Antibody Reactive Against Recombinant Protein. Western Blot detection against Immunogen (37 KDa) .
Storage Buffer	50 % glycerol
Storage Instruction	Store at -20°C or lower. Aliquot to avoid repeated freezing and thawing.

Applications

- Western Blot (Recombinant protein)

[Protocol Download](#)

- ELISA

Gene Info — BCL2L12

Entrez GeneID [83596](#)

GeneBank Accession# [BC007724](#)

Protein Accession# [AAH07724](#)

Gene Name BCL2L12

Gene Alias MGC120313, MGC120314, MGC120315

Gene Description BCL2-like 12 (proline rich)

Omim ID [610837](#)

Gene Ontology [Hyperlink](#)

Gene Summary The protein encoded by this gene belongs to the BCL-2 protein family. BCL-2 family members form hetero- or homodimers and act as anti- or pro-apoptotic regulators that are involved in a wide variety of cellular activities. This protein contains a Bcl-2 homology domain 2 (BH2). The function of this gene has not yet been determined. Two alternatively spliced transcript variants of this gene encoding distinct isoforms have been reported. [provided by RefSeq]

Other Designations BCL2-like 12|Bcl-2 related proline-rich protein

Disease

- [Cardiovascular Diseases](#)
- [Diabetes Mellitus](#)
- [Edema](#)