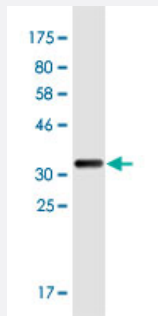


# RASSF5 monoclonal antibody (M01), clone 5C2

Catalog # H00083593-M01

Size 100 ug

## Applications



Western Blot detection against Immunogen (37.51 KDa) .

## Specification

<b>Product Description</b>	Mouse monoclonal antibody raised against a partial recombinant RASSF5.
<b>Immunogen</b>	RASSF5 (NP_113625, 100 a.a. ~ 206 a.a) partial recombinant protein with GST tag. MW of the GST tag alone is 26 KDa.
<b>Sequence</b>	DVRSIFEQPQDPRVPAERGEHCFELVLPGGPGWCDLCGREVLRQALRCTNCKFTCHPECRS LIQLDCSQQEGLSRDRPSPESTLTVTFSSQNVCKPVEETQRPPTL
<b>Host</b>	Mouse
<b>Reactivity</b>	Human
<b>Interspecies Antigen Sequence</b>	Mouse (81); Rat (84)
<b>Isotype</b>	IgG2a Kappa
<b>Quality Control Testing</b>	Antibody Reactive Against Recombinant Protein. Western Blot detection against Immunogen (37.51 KDa) .
<b>Storage Buffer</b>	In 1x PBS, pH 7.4
<b>Storage Instruction</b>	Store at -20°C or lower. Aliquot to avoid repeated freezing and thawing.

## Applications

- Western Blot (Recombinant protein)

[Protocol Download](#)

- ELISA

## Gene Info — RASSF5

Entrez GeneID	<a href="#">83593</a>
GeneBank Accession#	<a href="#">NM_031437</a>
Protein Accession#	<a href="#">NP_113625</a>
Gene Name	RASSF5
Gene Alias	MGC10823, MGC17344, Maxp1, NORE1, NORE1A, NORE1B, RAPL, RASSF3
Gene Description	Ras association (RalGDS/AF-6) domain family member 5
Omim ID	<a href="#">607020</a>
Gene Ontology	<a href="#">Hyperlink</a>
Gene Summary	This gene is a member of the Ras association domain family. It functions as a tumor suppressor, and is inactivated in a variety of cancers. The encoded protein localizes to centrosomes and microtubules, and associates with the GTP-activated forms of Ras, Rap1, and several other Ras-like small GTPases. The protein regulates lymphocyte adhesion and suppresses cell growth in response to activated Rap1 or Ras. Multiple transcript variants encoding different isoforms have been found for this gene. [provided by RefSeq]
Other Designations	OTTHUMP00000034534 OTTHUMP00000034535 Rap1-binding protein Ras association (RalGDS/AF-6) domain family 5 Ras effector-like protein novel Ras effector 1 regulator for cell adhesion and polarization enriched in lymphoid tissue tumor suppressor RASSF3

## Pathway

- [Leukocyte transendothelial migration](#)
- [Non-small cell lung cancer](#)

- [Pathways in cancer](#)

## Disease

- [Tobacco Use Disorder](#)