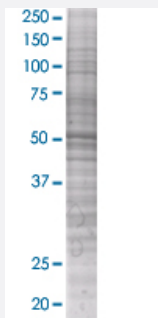


CDCA1 293T Cell Transient Overexpression Lysate(Denatured)

Catalog # H00083540-T01

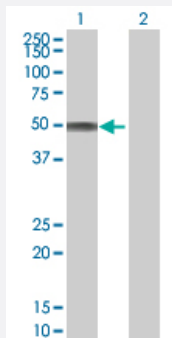
Size 100 uL

Applications



SDS-PAGE Gel

NUF2 transfected lysate.



Western Blot

Lane 1: NUF2 transfected lysate (54.3 KDa)

Lane 2: Non-transfected lysate.

Specification

| | |
|-------------------------------|------------------------|
| Transfected Cell Line | 293T |
| Plasmid | pCMV-CDCA1 full-length |
| Host | Human |
| Theoretical MW (kDa) | 51.15 |
| Interspecies Antigen Sequence | Mouse (73); Rat (79) |

Quality Control Testing

Transient overexpression cell lysate was tested with Anti-CDCA1 antibody ([H00083540-B01](#)) by Western Blots.
SDS-PAGE Gel
NUF2 transfected lysate.
Western Blot
Lane 1: NUF2 transfected lysate (54.3 KDa)
Lane 2: Non-transfected lysate.

Storage Buffer

1X Sample Buffer (50 mM Tris-HCl, 2% SDS, 10% glycerol, 300 mM 2-mercaptoethanol, 0.01% Bromophenol blue)

Storage Instruction

Store at -80°C. Aliquot to avoid repeated freezing and thawing.

Applications

- Western Blot

Gene Info — NUF2

Entrez GeneID[83540](#)**GeneBank Accession#**[BC008489](#)**Protein Accession#**[AAH08489](#)**Gene Name**

NUF2

Gene Alias

CDCA1, NUF2R

Gene Description

NUF2, NDC80 kinetochore complex component, homolog (S. cerevisiae)

Gene Ontology[Hyperlink](#)**Gene Summary**

This gene encodes a protein that is highly similar to yeast Nuf2, a component of a conserved protein complex associated with the centromere. Yeast Nuf2 disappears from the centromere during meiotic prophase when centromeres lose their connection to the spindle pole body, and plays a regulatory role in chromosome segregation. The encoded protein is found to be associated with centromeres of mitotic HeLa cells, which suggests that this protein is a functional homolog of yeast Nuf2. Alternatively spliced transcript variants that encode the same protein have been described. [provided by RefSeq

Other Designations

NUF2, NDC80 kinetochore complex component|OTTHUMP00000032177|OTTHUMP00000032178|cell division cycle associated 1

Disease

- [Genetic Predisposition to Disease](#)
- [Hypertension](#)