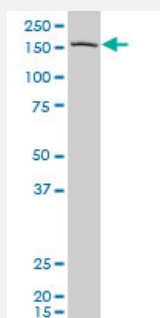


PCDH11Y polyclonal antibody (A01)

Catalog # H00083259-A01

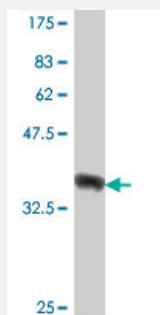
Size 50 uL

Applications



Western Blot (Cell lysate)

PCDH11Y polyclonal antibody (A01), Lot # 061025JCS1 Western Blot analysis of PCDH11Y expression in 293 (Cat # L026V1).



Western Blot detection against Immunogen (38.1 KDa) .

Specification

Product Description	Mouse polyclonal antibody raised against a partial recombinant PCDH11Y.
Immunogen	PCDH11Y (NP_004733, 57 a.a. ~ 165 a.a) partial recombinant protein with GST tag.
Sequence	EKNYTIREEIPENVLIGNLLKDLNLSLIPNKSLTTTMQFKLVYKTGDVPLIRIEEDTGEIFTTGARIDREK LCAGIPRDEHCFYEVEVAILPDEIFRLVKIRFLIEDIN
Host	Mouse
Reactivity	Human
Quality Control Testing	Antibody Reactive Against Recombinant Protein. Western Blot detection against Immunogen (38.1 KDa) .

Storage Buffer	50 % glycerol
----------------	---------------

Storage Instruction	Store at -20°C or lower. Aliquot to avoid repeated freezing and thawing.
---------------------	--

Applications

- Western Blot (Cell lysate)

PCDH11Y polyclonal antibody (A01), Lot # 061025JCS1 Western Blot analysis of PCDH11Y expression in 293 (Cat # L026V1).

[Protocol Download](#)

- Western Blot (Recombinant protein)

[Protocol Download](#)

- ELISA

Gene Info — PCDH11Y

Entrez GeneID	83259
---------------	-----------------------

GeneBank Accession#	NM_032973
---------------------	---------------------------

Protein Accession#	NP_004733
--------------------	---------------------------

Gene Name	PCDH11Y
-----------	---------

Gene Alias	PCDH-PC, PCDH11X, PCDH22, PCDHY
------------	---------------------------------

Gene Description	protocadherin 11 Y-linked
------------------	---------------------------

Omim ID	400022
---------	------------------------

Gene Ontology	Hyperlink
---------------	---------------------------

Gene Summary	<p>This gene belongs to the protocadherin gene family, a subfamily of the cadherin superfamily. The encoded protein consists of an extracellular domain containing 7 cadherin repeats, a transmembrane domain and a cytoplasmic tail that differs from those of the classical cadherins. The gene is located in a major X/Y block of homology and its most closely related cadherin superfamily member is located in this homologous region on the X chromosome. The protein is thought to play a fundamental role in cell-cell recognition essential for the segmental development and function of the central nervous system. Transcripts arising from alternative splicing encode isoforms with N- and C-terminal variation. [provided by RefSeq]</p>
--------------	--

Other DesignationsOTTHUMP00000033077|protocadherin 11 X-linked|protocadherin 22|protocadherin Y
